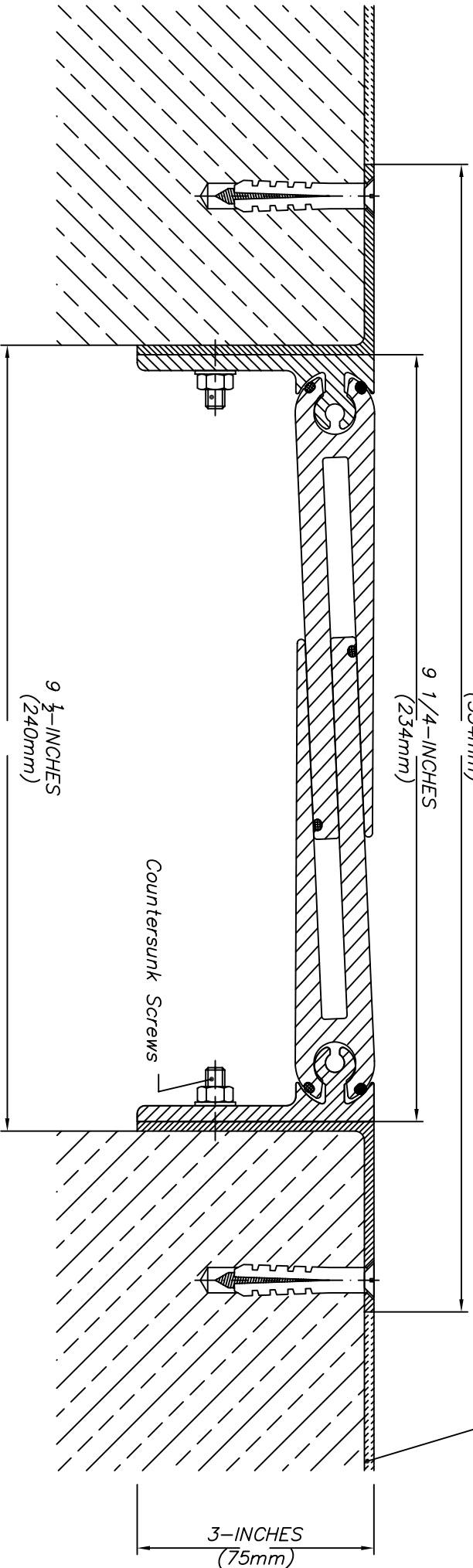


To adjust slight unevenness in the deck, a thin setting-bed of neat Epoxy by EMSEAL must be placed under the mounting flanges
 Anchors to be epoxy-anchors by EMSEAL
 Important: Fastening angles must make full contact with the joint edges.

14-INCHES
 (354mm)

Back edge of mounting flanges
 filled to achieve a smooth surface



Total movement :
 $+ 2''$ and $-1-1/2'' = \text{Total } 3-1/2''$
 (86 mm = +48 mm / -38 mm)

EMSEAL JOINT SYSTEMS LTD.

MIGUA FSN 280 Surface Mounted, Standard Traffic

THIS DOCUMENT CONTAINS INFORMATION OF A CONFIDENTIAL NATURE UNAVAILABLE TO THE PUBLIC AND IS PROPRIETARY TO EMSEAL. REPRODUCTION OR TRANSMISSION IN ANY FORM OR BY ANY MEANS, WITHOUT THE WRITTEN PERMISSION OF EMSEAL IS PROHIBITED. ANY UNAUTHORIZED REPRODUCTION IN WHOLE OR IN PART FROM BEING THE EXCLUSIVE RIGHT OF EMSEAL CORPORATION. ANY UNAUTHORIZED REPRODUCTION WHETHER IN WHOLE OR IN PART WILL BE PROSECUTED.

SCALE: DRAWN DATE:
 N.T.S. BY: LH 2007-06-18

PART NUMBER:
 FSN-280 1 OF 1