

30 ANCHORS TOTAL PER
13.12 LF (4m) LENGTH
(15 ANCHORS EACH SIDE)

.12 IN (3mm) PVC
FLOORING - MAY
BE WELDED TO
PVC INSERT

ELASTOMERIC SEAL - AVAILABLE
IN BLACK, GREY, BEIGE, & BROWN

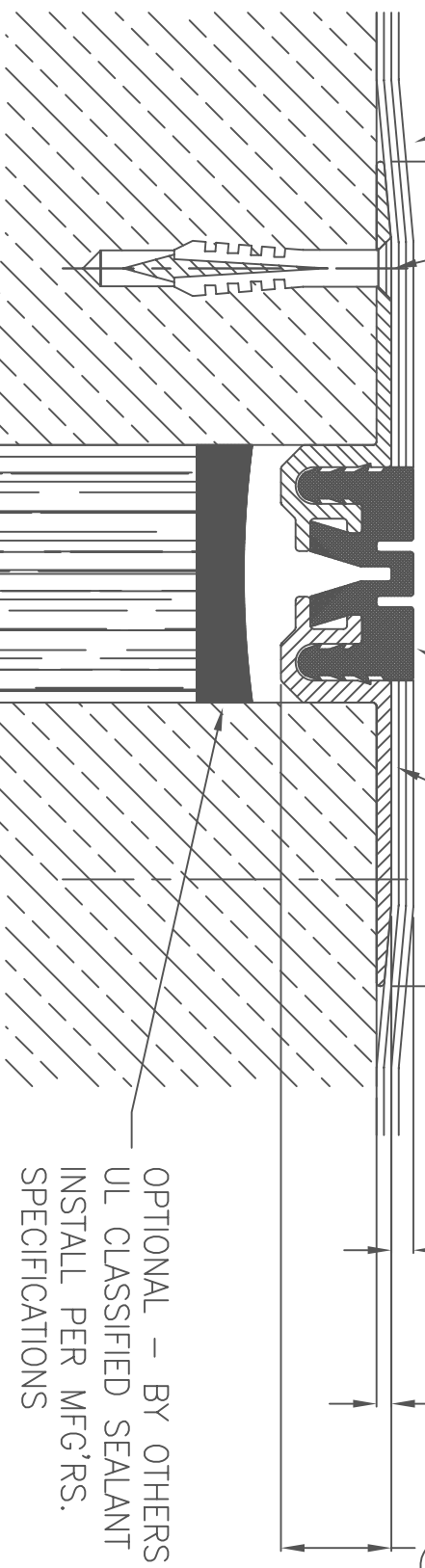
MIGUA FKN 35/15

4.41 IN
(112mm)

.12 IN
(3mm)

.08 IN
(2mm)

.59 IN
(15mm)



OPTIONAL - BY OTHERS
MULTI-LAYER ULTRA BLOCK
INSTALL TO PROPER DEPTH
PER MFG'R'S. SPECIFICATIONS
FOR PROPER FIRE RATING.

OPTIONAL - BY OTHERS
UL CLASSIFIED SEALANT
INSTALL PER MFG'RS.
SPECIFICATIONS

SEALANT MFGRS:
- DOW CORNING
- SPECSEAL

MOVEMENT = + .20 IN (5mm)
- .20 IN (5mm)

CD-ROM VERSION 3 FILENAME: FKN3515PVCFloor

EMSEAL JOINT SYSTEMS LTD.

MIGUA FKN 35/15 INTERIOR JOINT FOR PVC FLOOR COVERINGS

C:\DETAILS\MIGUA\FN\35\

THIS DOCUMENT CONTAINS INFORMATION OF A CONFIDENTIAL NATURE UNAVAILABLE TO THE PUBLIC AND IS PROPRIETARY TO EMSEAL CORPORATION. ANY UNAUTHORIZED USE WILL BE PROSECUTED. THIS DRAWING IS PROTECTED BY COPYRIGHT, THE RIGHT TO REPRODUCE IN ANY FORM BEING THE EXCLUSIVE RIGHT OF EMSEAL LTD OR THREE DIMENSIONS WILL BE PROSECUTED.

DRAWN	DATE:	SCALE:	SHEET
BY: WAJ	2/25/98	N.T.S.	No:
PART NUMBER:	002-0-00-00		