

Featuring

New Products for 2009



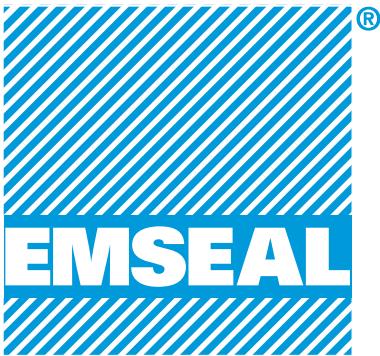
Walls And Facades



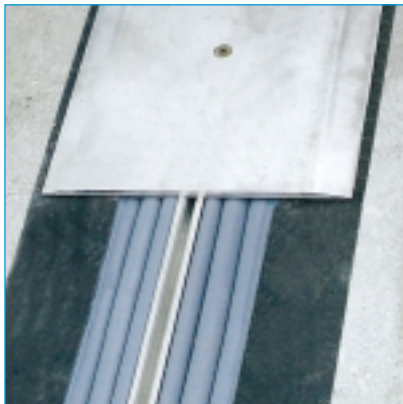
Decks • Solid Slabs



**Plaza Decks • Split Slabs
Green Roofs**



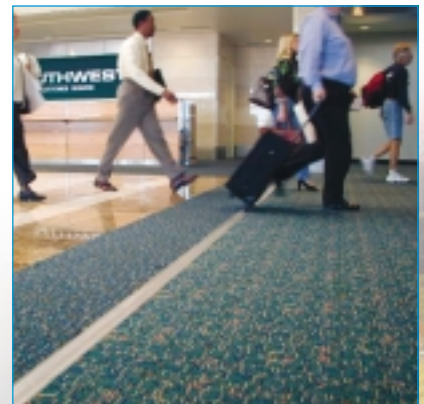
Proven Structural Expansion Joint and Preformed Sealant Solutions



Seismic Joints



Below Grade



Interiors

30 Years of Quality Product & Services



The Proven Solution

A Complete Line of Watertight Expansion Joint Products from EMSEAL

The Solution for

Wall Joints Above-Grade

BACKERSEAL is an economical preformed expanding foam sealant that provides watertight secondary sealing in applications behind conventionally installed liquid sealant and backer rod or behind directly field-applied low modulus liquid sealants. For mean joint sizes from 1/2 inch up to 6 inches. *Movement of $\pm 25%$ (50% total)*



COLORSEAL and **SEISMIC COLORSEAL** combine factory-applied and cured silicone bellows with a modified acrylic-impregnated expanding foam sealant. They provide watertightness, thermal insulation, 50% (COLORSEAL) and 100% (SEISMIC COLORSEAL) movement capability, color coordination with substrates and does not rely on invasive anchors. For mean joint sizes from 1/2 inch up to 12 inches. It's available in 12 colors.



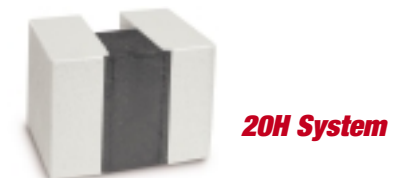
COLORSEAL DS and **SEISMIC COLORSEAL DS (Double Sided)** are unique, highly innovative, customized variations of EMSEAL's acclaimed COLORSEAL and SEISMIC COLORSEAL material. Ideally suited for shallow substrates where sealing or finishing of both sides of the structure are desired in one installation. For mean joint sizes from 1/2 inch up to 10 inches. *Movement of $\pm 50%$ (100% total)*



The Solution for

Wall Joints Below-Grade

20H System (the system being the foam, epoxy and topcoat) is a preformed expanding foam sealant produced by impregnating permanently elastic, high-density, open-cell polyurethane foam with water-based, polymer-modified asphalt. For positive-side installation in foundation and tunnel wall joints. For mean joint sizes from 1/2 inch to 6 inches. *Movement of $\pm 25%$ (50% total)*



DSM System is a watertight preformed precompressed primary seal. For positive-side installation in foundation and tunnel wall joints. For mean joint sizes from 1/2 inch up to 6 inches. *Movement of + 30%, -25% (55% total)*



Toll Free: 800.526.8365

Copyright © 2009 by EMSEAL Joint Systems Ltd. All Rights Reserved

EMSEAL JOINT SYSTEMS LTD, 25 Bridle Lane, Westborough, MA USA 01581 / Phone: 508.836.0280 / Fax: 508.836.0281

EMSEAL LLC, 120 Carrier Drive, Toronto, ON, Canada M9W 5R1 / Phone: 416.740.2090 / Fax: 416.740.0233

For the latest information on all EMSEAL products and services visit WWW.EMSEAL.COM

The Solution for

Decks • Solid Slab

DSM System is a watertight, traffic durable, joint face-adhered, precompressed primary seal. The ideal solution for structural and non-structural deck joints in parking, stadium, ice rink perimeters, stair and elevator perimeters and other applications of precast concrete and metal-reinforced substrates. An alternative to caulk and backer rod in welded tee connections and other static and control joints. For joint sizes from 3/4 inch up to 4 inches. *Movement of + 30%, -25% (55% total)*



DSM System

HORIZONTAL COLORSEAL foam utilizes a high movement silicone bellows for protected deck applications beneath coverplates, or at perimeters in decks, stadiums, arenas, and more. For joint sizes from 1/2 inch up to 12 inches.



**HORIZONTAL
COLORSEAL**

THERMAFLEX is a watertight membrane/nosing system for parking decks including exposed top decks, bus depots, stadiums, etc. This system becomes integral with the deck as nosing material penetrates perforations and bonds to the concrete substrate. Material aggregate/resin ratio not to exceed 2:1 by weight. For joints sizes from 1 inch up to 6 inches.



THERMAFLEX TM



THERMAFLEX TCR

SJS (Seismic Joint System) is an innovative, watertight, sound dampening, seismic, large-joint system for parking decks, stadiums and floor expansion joint needs. Uses non-invasive anchoring. Complete with integral stainless steel or aluminum coverplate. For mean joint sizes from 4 inches up to 18 inches. *Movement of \pm 50% (100% total)*

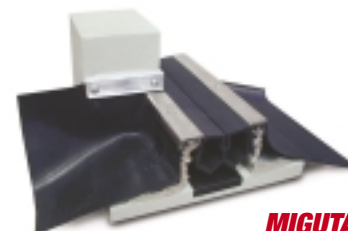


SJS System

The Solution for

Plaza Decks • Split Slab • Green Roofs

MIGUTAN FP 110 AND FP 155 are watertight joints integrated into buried waterproofing membranes in split slab deck construction of parking, plaza, podium, stadium concourses, etc. MIGUTAN is the only system of its kind with a 20 year track record and tens of thousands of feet installed and functioning. For mean joint sizes from 2 inches up to 5 inches.



MIGUTAN

SJS-FP (Seismic Joint System) is a watertight system which extends the SJS system through the use of side flashing sheets to waterproof split slabs, concourses and plaza decks. For mean joint sizes from 4 inches up to 18 inches. *Movement of \pm 50% (100% total)*



SJS/FP

Toll Free: 800.526.8365

Copyright © 2009 by EMSEAL Joint Systems Ltd. All Rights Reserved

EMSEAL JOINT SYSTEMS LTD, 25 Bridle Lane, Westborough, MA USA 01581 / Phone: 508.836.0280 / Fax: 508.836.0281

EMSEAL LLC, 120 Carrier Drive, Toronto, ON, Canada M9W 5R1 / Phone: 416.740.2090 / Fax: 416.740.0233

For the latest information on all EMSEAL products and services visit WWW.EMSEAL.COM

NEW*The Solution for*

Submerged Seals

CHEMSEAL is a watertight expansion joint system which features a polysulfide-bellows sealing surface backed by an integral pressure-resisting impregnated foam backing. The polysulfide bellows side provides resistance to many chemicals commonly found in non-pure solutions. This makes CHEMSEAL a great solution for joints and seams occurring in waste water tanks, chlorinated water reservoirs, fountains, pools, industrial testing tanks, cooling towers and water parks. CHEMSEAL's non-invasive anchoring is well suited to the construction of many submerged applications. The continuity of seal is maintained in corners and throughout perpendicular changes in direction by the installation of CHEMSEAL "Universal 90's" (see below.)

**CHEMSEAL**

DSF System is an expansion joint system for use in clean or potable water applications. The high performance bonding epoxy and silicone bellows have been engineered and passed the requirements of NSF/ANSI STANDARD 61 for use in drinking water systems making it an ideal choice for use in potable water tanks and other clean water applications.

**DSF System****NEW***The Solution for*

Continuity of Seal at Upturns, Downturns and Termination Points

Universal-90's Transitions and Terminations are patent-pending factory fabricated single-piece 90° units constructed from the same foam material as the connecting foam expansion joint system. Bellows are constructed on both sides allowing a waterseal in an inner or outer 90° corner. This single unit achieves the greatest possible continuity of seal in transitions in planes, avoiding the limitations of field butts and miters.

Using Universal 90°'s in your expansion joint system yields the benefit of reduced installation effort and time. By inserting a factory fabricated single-piece corner the installer avoids the need to measure and accomplish field cuts. Installation time is greatly reduced and the integrity of the seal is maintained.

Universal-90's are available for all coated EMSEAL products.

**Universal-90**
Patent Pending**Toll Free: 800.526.8365**

Copyright © 2009 by EMSEAL Joint Systems Ltd. All Rights Reserved

EMSEAL JOINT SYSTEMS LTD, 25 Bridle Lane, Westborough, MA USA 01581 / Phone: 508.836.0280 / Fax: 508.836.0281**EMSEAL LLC**, 120 Carrier Drive, Toronto, ON, Canada M9W 5R1 / Phone: 416.740.2090 / Fax: 416.740.0233For the latest information on all EMSEAL products and services visit **WWW.EMSEAL.COM**

The Solution for

Interior Floor Joints

MIGUTRANS FS Series are heavy-duty interior expansion joint systems. They feature low-profile design, ribbed no-skid surface in a long lasting, maintenance-free, solid all-metal profile. The FS Series is manufactured in a wide range of widths and is especially effective for use in areas that encounter heavy traffic or point loads from carts, forklifts, gurneys, wheelchairs, etc.



FS Series

MIGUA FN and FSN Series are surface-mounted expansion joint assembly systems designed to bridge various width joint gaps. They are comprised of metal anchorage units installed on both sides of the gap and a flexible rubber insert or rugged interlocking aluminum extrusions bridging the gap. The anchorage units are fastened on top of the finished floor for an economical solution for building owners and designers.



FN Series



FSN Series

MIGUA FSC Series are engineered for large interior joint openings including seismic conditions. Fits openings 4 inches to 16 inches.



FSC Series

The Solution for

Interior Wall Joints

MIGUA KF250 and WP Series are functional, attractive aluminum joint covers. The KF Series uses stainless steel clips for quick and easy installation. Caters to a large range of expansion joint widths.



KF250 Series



WP Series

The Solution for

Fire & Water Barriers in Larger Expansion Joint Applications

Fireline 520 Series® Fire Barriers are UL + ULC rated and are listed by Warnock Hersey US/CA for 1 hour, 2 hour, or 3 hour rated fire blankets. Constructed to solve the problem of expansion joint movement which allows the leak through of smoke, fire and gasses, these systems are mountable from the top or bottom of the floor greatly reducing installation time and trouble. For larger joints and gaps ranging from 4 inches to 32 inches.



Fireline 520 Series®

Fireline WaterGuard Series® is a UL + ULC rated water protection and drainage system built into the fire barrier system for 1 hour, 2hour, or 3hour rating and are listed by Warnock Hersey US/CA. Factory assembled for new construction or retrofit where secondary water tightness is designed into a structure.



Fireline WaterGuard Series®



For more information about
EMSEAL watertight systems
please contact our technical
department at 800-526-8365
or visit us at www.emseal.com

Toll Free: 800.526.8365

Copyright © 2009 by EMSEAL Joint Systems Ltd. All Rights Reserved

EMSEAL JOINT SYSTEMS LTD, 25 Bridle Lane, Westborough, MA USA 01581 / Phone: 508.836.0280 / Fax: 508.836.0281

EMSEAL LLC, 120 Carrier Drive, Toronto, ON, Canada M9W 5R1 / Phone: 416.740.2090 / Fax: 416.740.0233

For the latest information on all EMSEAL products and services visit WWW.EMSEAL.COM

Introducing **EMSHIELD**: Water/Fire/Movement



EMSHIELD DFR2

NEW

Traffic Durable, Watertight, Deck Fire-Rated Expansion Joint

EMSHIELD DFR2 is a patent-pending single unit fire-retardant foam expansion joint which provides water protection and an effective fire barrier in horizontal and deck applications. **EMSHIELD DFR2** (Deck, Fire-Rated 2-Hours) is the first in a comprehensive line of breakthrough, multi-function, structural expansion joint materials being released by EMSEAL. DFR2 has been tested and certified by Underwriters Laboratories (UL) to the rigors of UL 2079.



EMSHIELD DFR2
Patent Pending

Fire-retardant impregnated foam is factory pre-coated on the underside with an intumescent fire-proofing material. The traffic surface receives a traffic-grade silicone coating. The resulting composite is then factory compressed to less than its nominal size for installation into structural or other openings.

EMSHIELD DFR2 provides a watertight, clean handling, UV stable, non-staining, low-temperature-flexible, high-temperature-stable, watertight, traffic durable and fire-rated joint seal in a single installation process.

For joints 1 inch to 4 inches.
Movement of $\pm 25\%$ (50% total)



EMSHIELD WFR2

NEW

Energy-Efficient, Watertight, Wall Fire-Rated Expansion Joint

EMSHIELD WFR2 is a patent-pending single unit fire-rated expansion joint which provides water protection, sound attenuation, thermal insulation, color coordination, and accommodates structural joint movement in vertical wall applications. **WFR2** (Wall, Fire-Rated 2-Hours) continues the line of **EMSHIELD** breakthrough, multi-function, structural expansion joint materials. **WFR2** has also been tested and certified by Underwriters Laboratories (UL) to the requirements of ULC and UL 2079.



EMSHIELD WFR2
Patent Pending

For **WFR2** the fire-retardant impregnated foam is factory pre-coated on both faces with an intumescent fire-proofing material. It's then coated again on both faces with a waterproof silicone coating which is available in choice of colors for each side.

EMSHIELD WFR2 provides a watertight, clean handling, UV stable, non-staining, low-temperature-flexible, high-temperature-stable, watertight, energy-efficient, sound attenuating and fire-rated joint seal in a single installation process.

For joints 1 inch to 6 inches.
Movement of $\pm 25\%$ (50% total)

Toll Free: 800.526.8365

Copyright © 2009 by EMSEAL Joint Systems Ltd, All Rights Reserved

EMSEAL JOINT SYSTEMS LTD, 25 Bridle Lane, Westborough, MA USA 01581 / Phone: 508.836.0280 / Fax: 508.836.0281

EMSEAL LLC, 120 Carrier Drive, Toronto, ON, Canada M9W 5R1 / Phone: 416.740.2090 / Fax: 416.740.0233

For the latest information on all EMSEAL products and services visit **WWW.EMSEAL.COM**