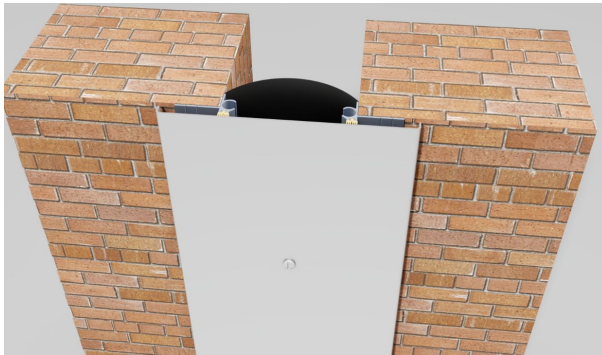




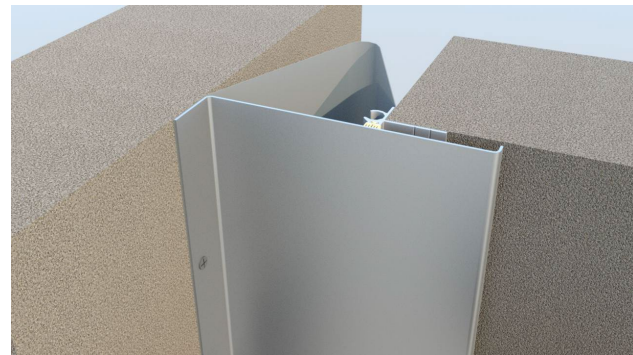
BUILDING TRUST



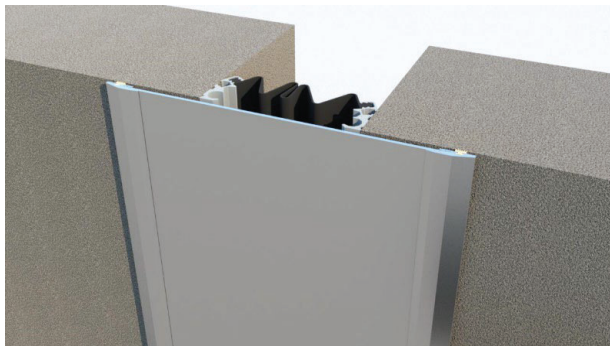
Installation Procedure



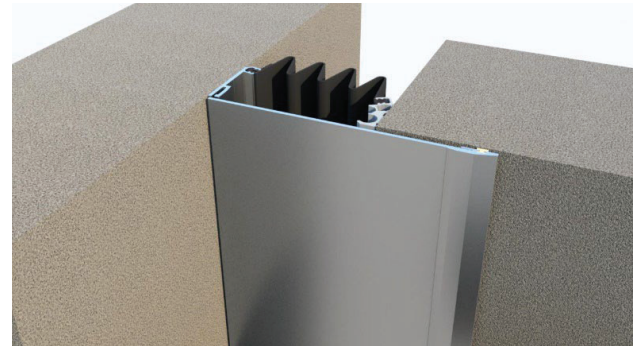
Model WFE



Model WFE-C



Model WFX



Model WFX-C

Wabo®SeismicCover Exterior

Exterior Seismic Expansion Joint Cover System

The following installation procedure is very important and must be fully understood prior to beginning any work. To ensure proper installation and performance of expansion joint system the following actions must be completed by the installing contractor. Failure to do so will affect product warranty.

- 1) Carefully read and understand installation procedure. Contact Emseal's Technical Service Department at (508) 836-0280 for product assistance.
- 2) Inspect all shipments and materials for missing or damaged components and hardware. Contact Customer Service at (508) 836-0280 with Emseal's order number and invoice for prompt assistance.
- 3) Inspect substrate or adjacent construction for acceptance before beginning work. Report unacceptable construction to the project manager for scheduled repair work.
- 4) Review Emseal shop drawings for project specific detailed information if Engineering services were purchased at time of order.

Health & Safety

During the installation of any Sika Emseal product, appropriate personal protective items should be worn at all times, including but not limited to the following:

- Proper work clothing
- Safety glasses
- Safety boots
- Gloves
- Hard hat



Local rules and regulations regarding safe work environments and health should be followed.



BUILDING TRUST

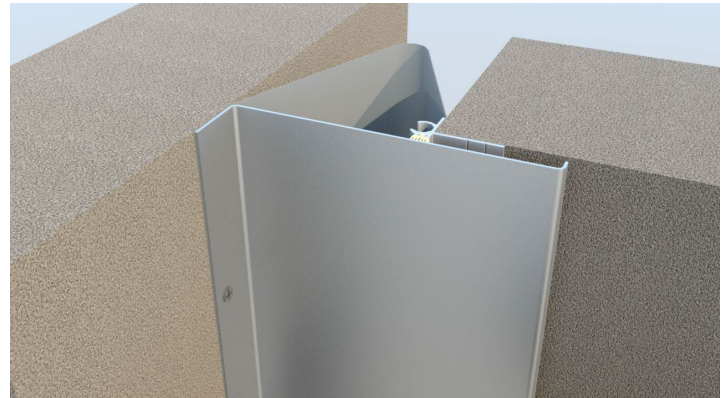
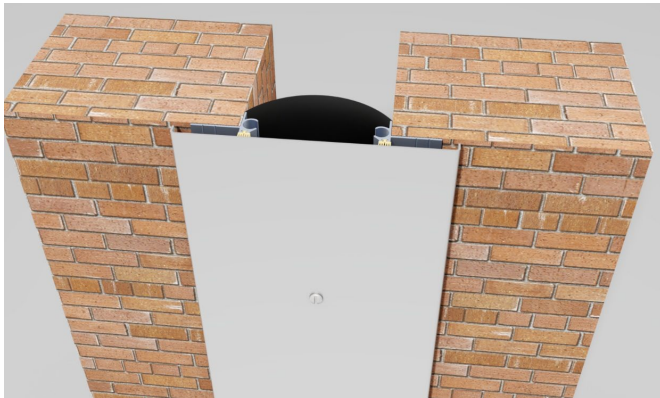




BUILDING TRUST



Installation Procedure



Wabo®SeismicCover Exterior, WFE & WFE-C

Exterior Seismic Expansion Joint Cover System

The following installation procedure is very important and must be fully understood prior to beginning any work. To ensure proper installation and performance of expansion joint system the following actions must be completed by the installing contractor. Failure to do so will affect product warranty.

- 1) Carefully read and understand installation procedure. Contact Emseal's Technical Service Department at (508) 836-0280 for product assistance.
- 2) Inspect all shipments and materials for missing or damaged components and hardware. Contact Customer Service at (508) 836-0280 with Emseal's order number and invoice for prompt assistance.
- 3) Inspect substrate or adjacent construction for acceptance before beginning work. Report unacceptable construction to the project manager for scheduled repair work.
- 4) Review Emseal shop drawings for project specific detailed information if Engineering services were purchased at time of order.

Health & Safety

During the installation of any Sika Emseal product, appropriate personal protective items should be worn at all times, including but not limited to the following:

- Proper work clothing
- Safety glasses
- Safety boots
- Gloves
- Hard hat



Local rules and regulations regarding safe work environments and health should be followed.

Product Components

The following components are required for the installation of this product:



Elastomeric Gasket
(P/N 15958)

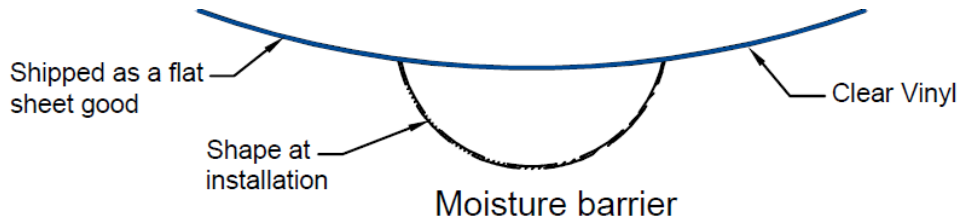


1/4" x 1 1/2" Screw
with Neoprene Washer
(P/N 5656)



Extruded Aluminum
Base Member
(P/N 15861)

Installer Note: Components shown below are shipped in varying sizes according to joint system model to be installed. Consult your shipping documents for proper part listings and requirements. Shipment should include splicing hardware and components which are not shown on this page.



BUILDING TRUST



Model WFE



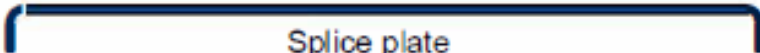
Aluminum Cover Plate

Model	"A"	Part Number	Model	"A"	Part Number
WFE-200	6 3/8"	15902	WFE-1000	17"	15906
WFE-400	8 3/8"	15903	WFE-1200	19 3/4"	15907
WFE-600	11 3/8"	15904	WFE-1800	28 3/4"	15908
WFE-800	14 3/8"	15905	WFE-2400	37 3/4"	15909



Self-centering bar

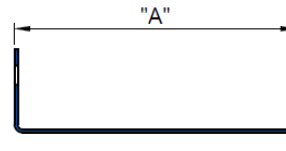
Model	"B"	Part Number	Model	"B"	Part Number
WFE-200	7"	11089	WFE-1000	18 3/8"	15630
WFE-400	12 3/8"	15643	WFE-1200	22 3/8"	15631
WFE-600	12 3/8"	15643	WFE-1800	32 3/8"	15644
WFE-800	18 3/8"	15630	WFE-2400	42 3/8"	15605



Note: splice plate has same configuration as cover plate but is 2" lg.

Model	Part Number	Model	Part Number
WFE-200	15920	WFE-1000	15924
WFE-400	15921	WFE-1200	15925
WFE-600	15922	WFE-1800	15926
WFE-800	15923	WFE-2400	15930

Model WFE-C



Aluminum Cover Plate

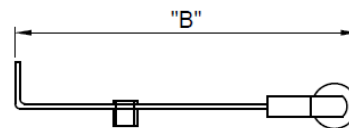
Model	"A"	Part Number	Model	"A"	Part Number
WFE-200C	3 3/4"	15910	WFE-1000C	15 7/8"	15914
WFE-400C	6 3/4"	15911	WFE-1200C	18 7/8"	15915
WFE-600C	9 3/4"	15912	WFE-1800C	27 7/8"	15916
WFE-800C	12 3/4"	15913	WFE-2400C	36 7/8"	15917



Splice plate

Note: splice plate has same configuration as cover plate but is 2" lg.

Model	Part Number	Model	Part Number
WFE-200C	15931	WFE-1000C	15935
WFE-400C	15932	WFE-1200C	15936
WFE-600C	15933	WFE-1800C	15937
WFE-800C	15934	WFE-2400C	15938



Self-centering bar

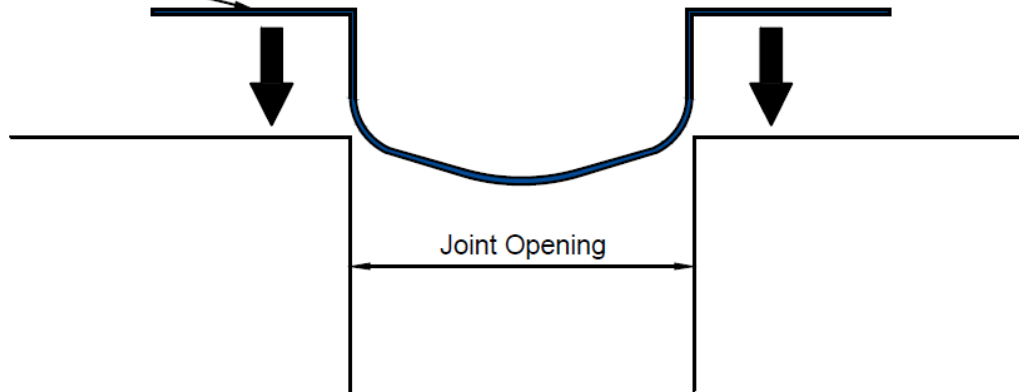
Model	"B"	Part Number
WFE-1000C	14"	15660
WFE-1200C	16"	15661
WFE-1800C	22"	15663
WFE-2400C	28"	15665

Installation - WFE

1

Install moisture barrier. Ensure proper drape and relaxation to accommodate joint movement.

Moisture Barrier

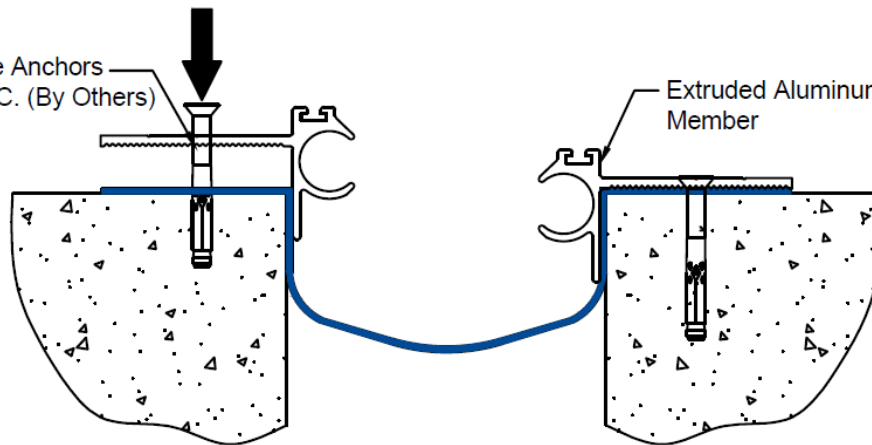


2

Position extruded aluminum base member flush with the inside face of wall structure and fasten base member down utilizing concrete anchors (by others).

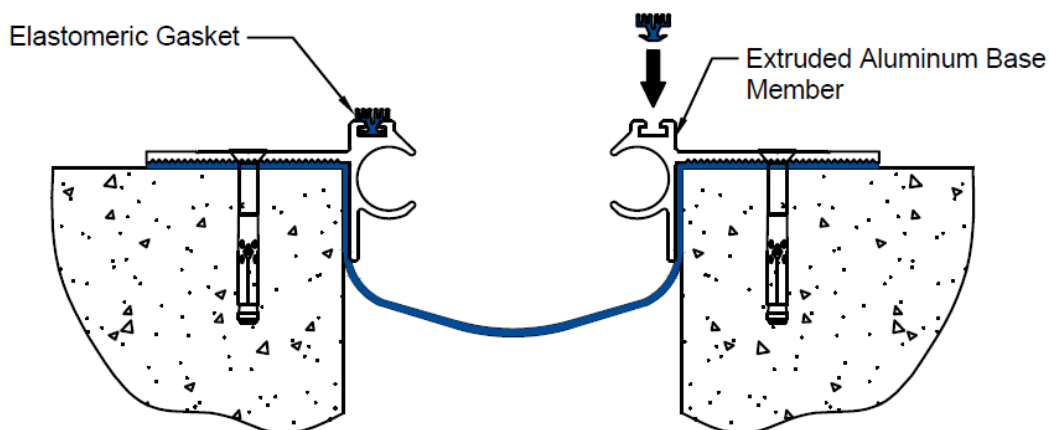
1/4" Dia Concrete Anchors
spaced at 24" O.C. (By Others)

Extruded Aluminum Base
Member



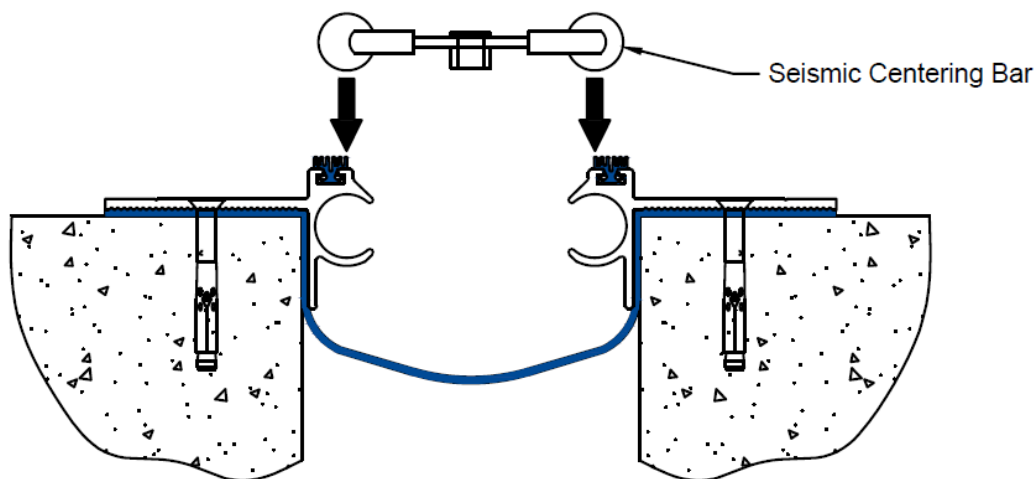
3

Install elastomeric gaskets. It is recommended to slide gasket into extrusion cavity from its ends as work progresses.



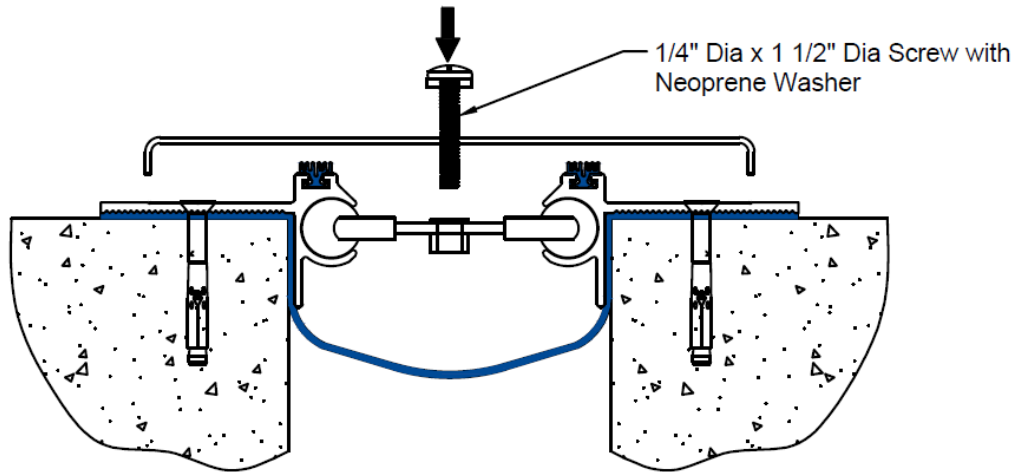
4

As work progresses with placement of base members, install self-centering bars by sliding the spherical ends of the bars into and through the circular cavities of the base members. Set at an approximate spacing of 18" O.C., ensure that the "top" indicator is facing up and that all bars are in the same orientation.



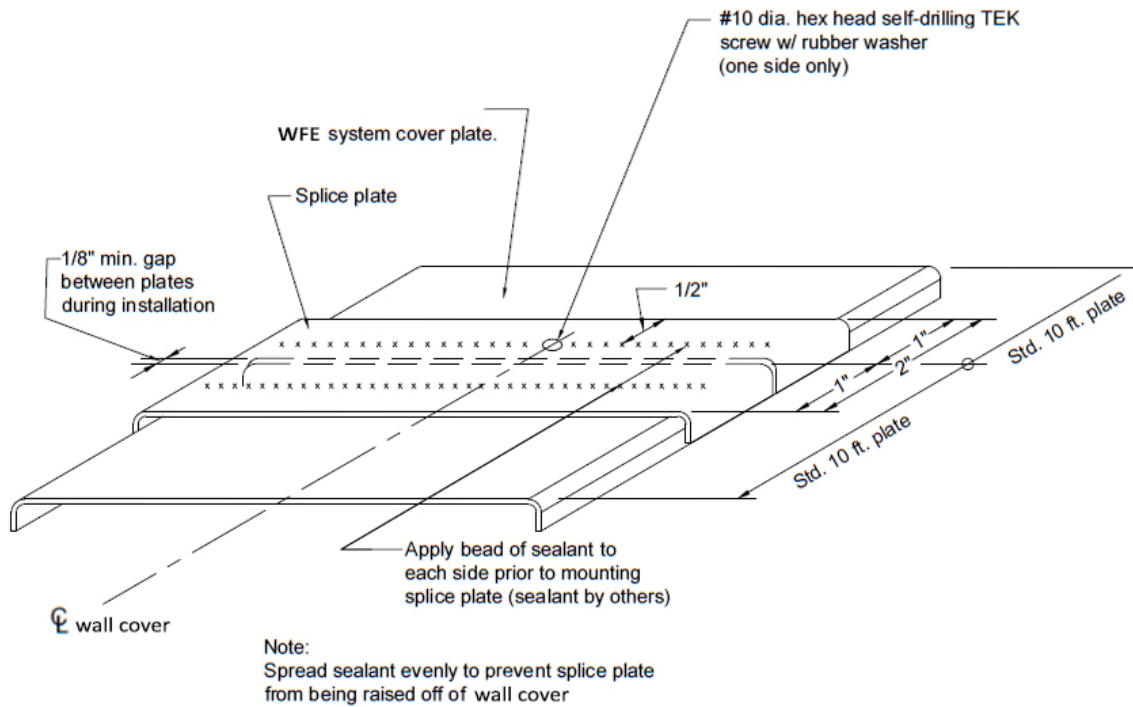
5

Install aluminum cover using 1/4" diameter screw and neoprene washers.



6

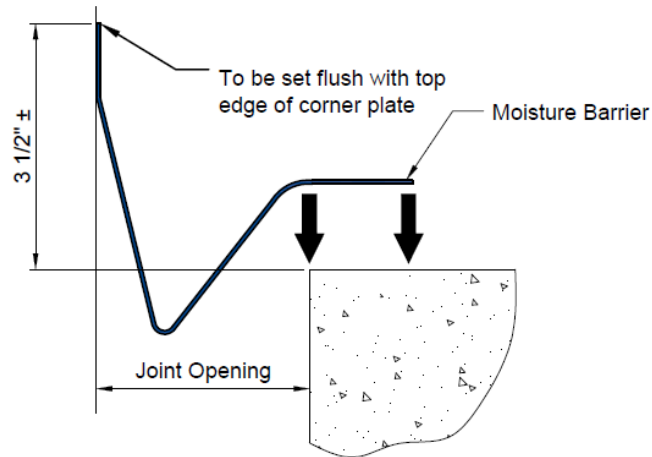
Install splice plates.



Installation - WFE-C

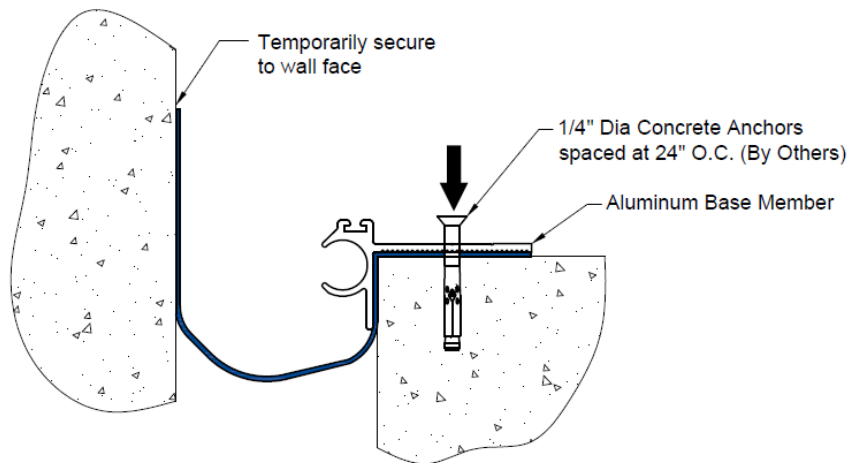
1

Install moisture barrier. Ensure proper drape and relaxation to accommodate joint movement.



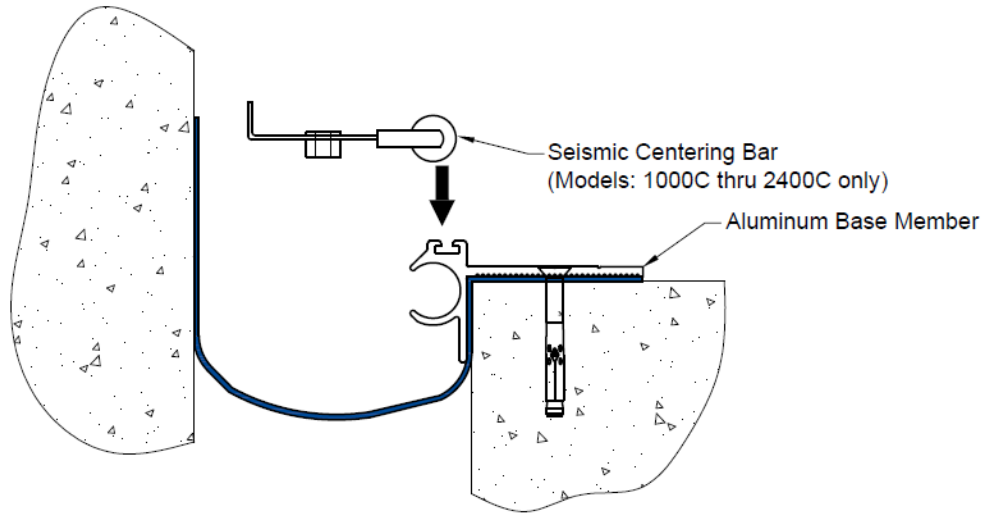
2

Position extruded aluminum base member from the inside edge of the wall structure and fasten base member down utilizing concrete anchors (by others).



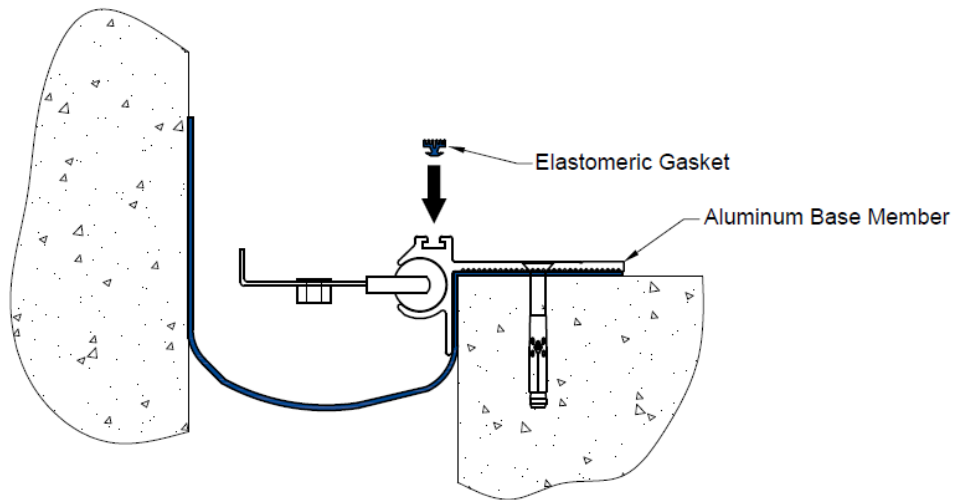
3

As work progresses with placement of base members, install self-centering bars by sliding the spherical ends of the bars into and through the circular cavities of the base members. Set at an approximate spacing of 18" O.C. Ensure that the "top" indicator is facing up and that all bars are in the same orientation. Once in place, use small pieces of duct tape to hold it level for easy insertion of screws while attaching aluminum cover.



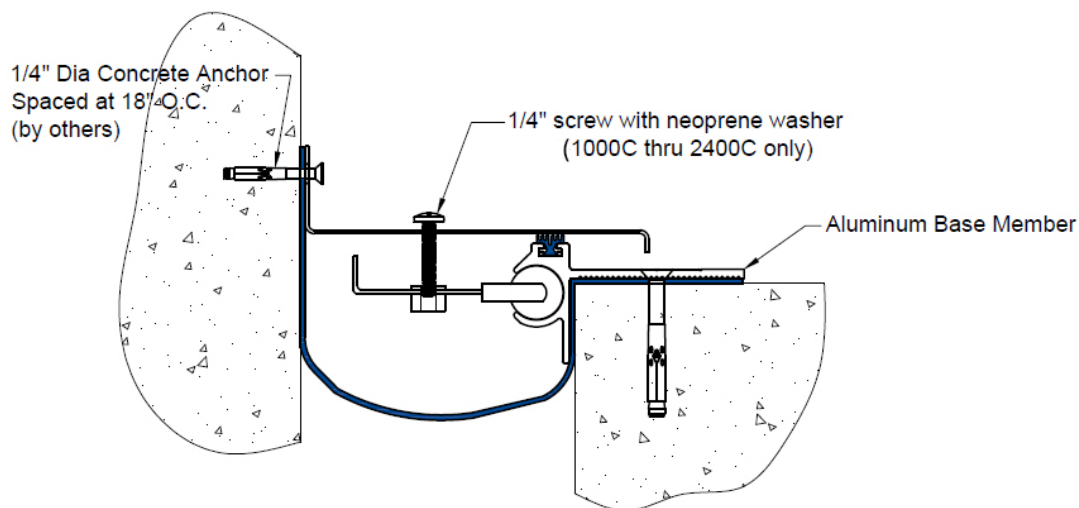
4

Install elastomeric gasket. It is recommended to slide gasket into extrusion cavity from its ends as work progresses.

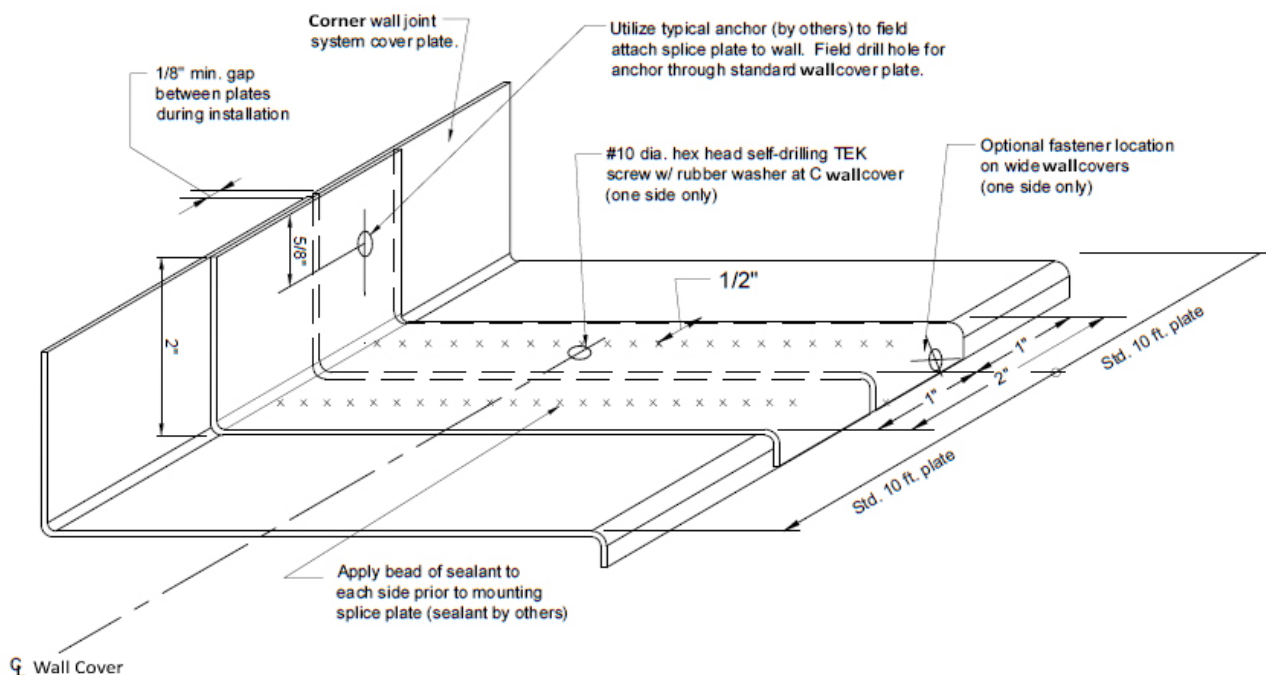


Following anchor manufacturer's installation procedure, fasten the aluminum cover plate to the wall by using the 1/4" diameter concrete anchor (by others).

Note: For system sizes 1000C thru 2400C, fasten the aluminum cover plate to the centering bars by using the 1/4" diameter screw with neoprene washer. Once the cover plate has been fastened to the centering bars, the cover plate can be fastened to the wall using the 1/4" diameter concrete anchors.



Install splice plates.



BUILDING TRUST



Information provided herein, including but not limited to, any drawing, design, photograph, graphic, or statement(s) ("Materials") are proprietary and the property of Sika Emseal ("Company"). Reproduction, translation, or reduction to any electronic medium or machine readable form, in whole or part, is strictly prohibited, except for the express purpose for which it has been furnished, without prior written consent of Company. All Materials contained herein are provided by Company for information purposes only. Company reserves the right to amend or withdraw any information contained in the Materials without notice. All technical or other advice by Company, whether verbal or written, concerning products, or the use of products in specific situations ("Advice") is given by Company and is used at the User's own risk.

Sika Emseal
25 Bridle Lane, Westborough, MA 01581 USA
Phone: 508-836-0280 / Fax 508-836-0281
www.emseal.com

Rev. 1.0 04-10-2024

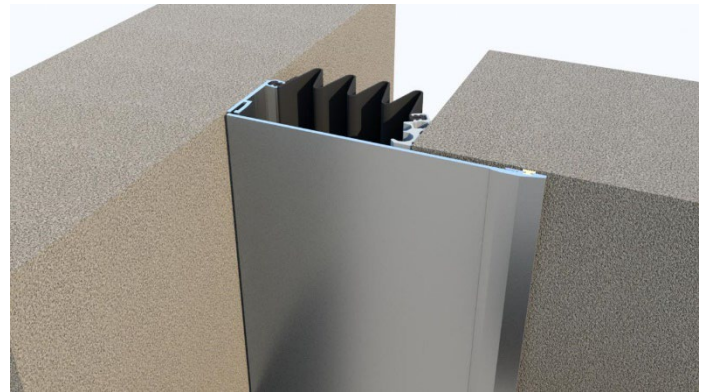
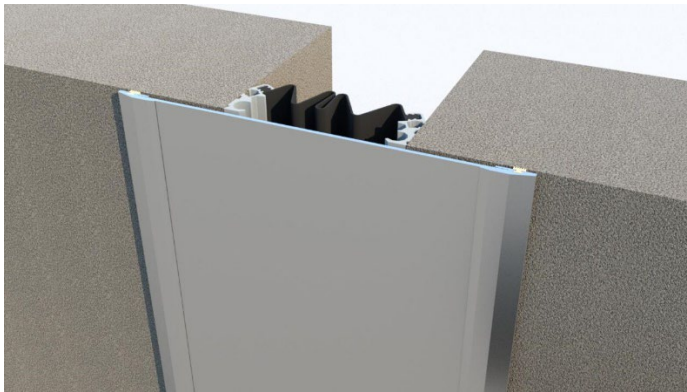




BUILDING TRUST



Installation Procedure



Wabo®SeismicCover Exterior, WFX & WFX-C

Exterior Seismic Expansion Joint Cover System

The following installation procedure is very important and must be fully understood prior to beginning any work. To ensure proper installation and performance of expansion joint system the following actions must be completed by the installing contractor. Failure to do so will affect product warranty.

- 1) Carefully read and understand installation procedure. Contact Emseal's Technical Service Department at (508) 836-0280 for product assistance.
- 2) Inspect all shipments and materials for missing or damaged components and hardware. Contact Customer Service at (508) 836-0280 with Emseal's order number and invoice for prompt assistance.
- 3) Inspect substrate or adjacent construction for acceptance before beginning work. Report unacceptable construction to the project manager for scheduled repair work.
- 4) Review Emseal shop drawings for project specific detailed information if Engineering services were purchased at time of order.

Health & Safety

During the installation of any Sika Emseal product, appropriate personal protective items should be worn at all times, including but not limited to the following:

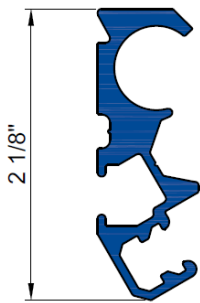
- Proper work clothing
- Safety glasses
- Safety boots
- Gloves
- Hard hat



Local rules and regulations regarding safe work environments and health should be followed.

Product Components

The following components are required for the installation of this product:



Aluminum Extrusion
(p/n: 15398)



INS Seal Strip
(p/n: 2838)



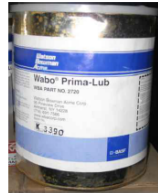
Screw 1/4" x 1 1/4" Lg.
(p/n: 5621)



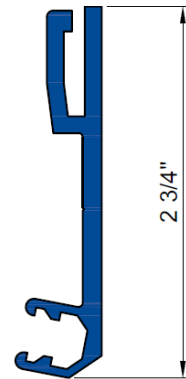
Screw 1/4" x 2"
(p/n: 6526)



Screw 1/4" x 2 1/2"
Corner conditions
(p/n: 6524)

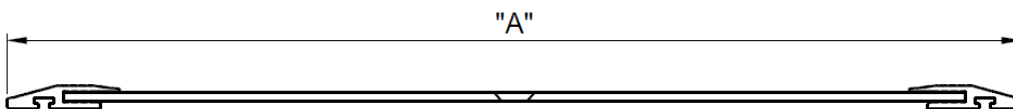


PrimaLub Adhesive
(p/n: 2720)



Aluminum Wall Mount Extrusion
Corner applications only
(p/n: 18044)

Components shown below vary in size depending on model of system:

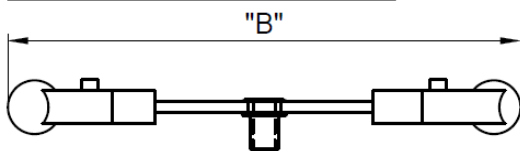


BUILDING TRUST



Coverplate - flush condition

Model #	Part #	"A" dim.
WFX-600	15400	13 1/2"
WFX-800	15401	17 1/2"
WFX-1000	15402	21 1/2"
WFX-1200	15403	25 1/2"
WFX-1800	15404	37 1/2"
WFX-2400	15405	49 1/2"



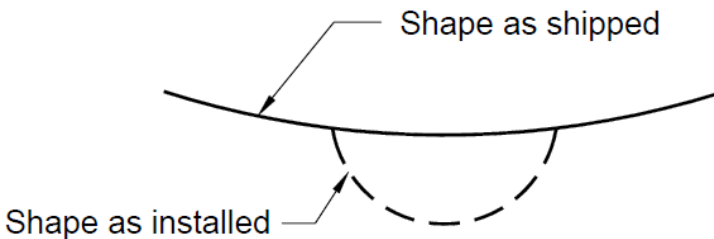
Self-Center Bar - flush condition

Model #	Part #	"B" dim.
WFX-600	15643	12 3/8"
WFX-800	15630	18 3/8"
WFX-1000	15631	22 3/8"
WFX-1200	15603	26 3/8"
WFX-1800	15604	38 3/8"
WFX-2400	15641	50 3/8"



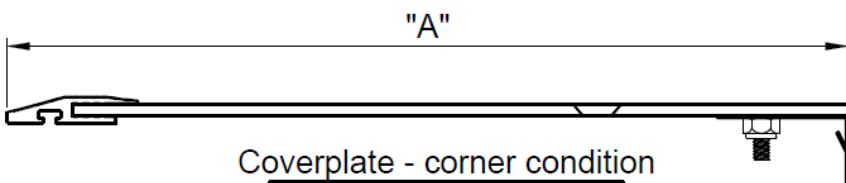
Moisture Barrier - extruded

Model #'s	Part #
WFX-600 & 600C	1175
WFX-800 & 800C	1175
WFX-1000 & 1000C	1176
WFX-1200 & 1200C	1177



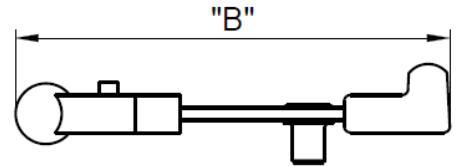
Moisture Barrier - sheet material

Model #'s	Part #
WFX-1800 & 1800C	2962
WFX-2400 & 2400C	2962



Coverplate - corner condition

Model #	Part #	"A" dim.
WFX-600C	15406	9 5/8"
WFX-800C	15407	12 5/8"
WFX-1000C	15408	15 5/8"
WFX-1200C	15409	18 5/8"
WFX-1800C	15410	27 5/8"
WFX-2400C	15411	36 5/8"



Self-center bar - corner condition

Model #	Part #	"B" dim.
WFX-600C	15658	9"
WFX-800C	15659	12"
WFX-1000C	15660	14"
WFX-1200C	15661	16"
WFX-1800C	15663	22"
WFX-2400C	15665	28"



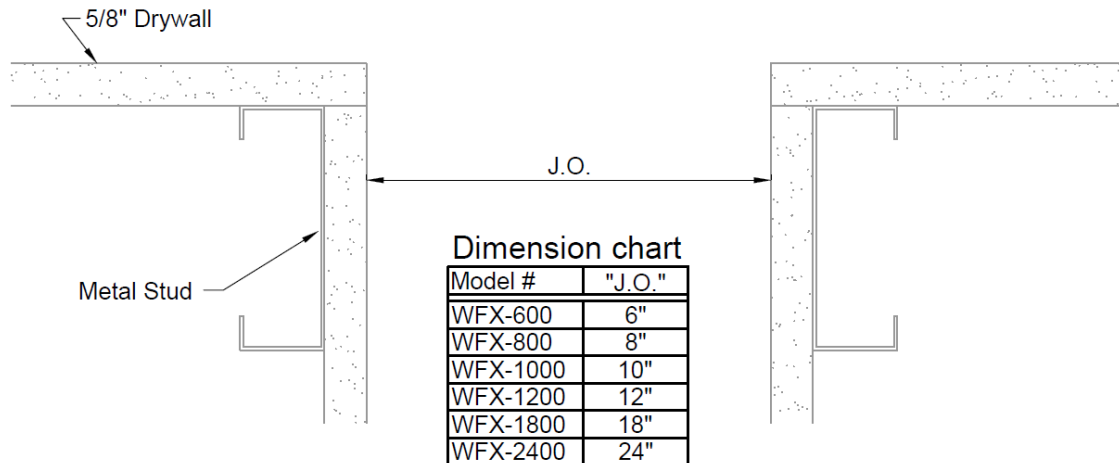
BUILDING TRUST



Installation – WFX

1

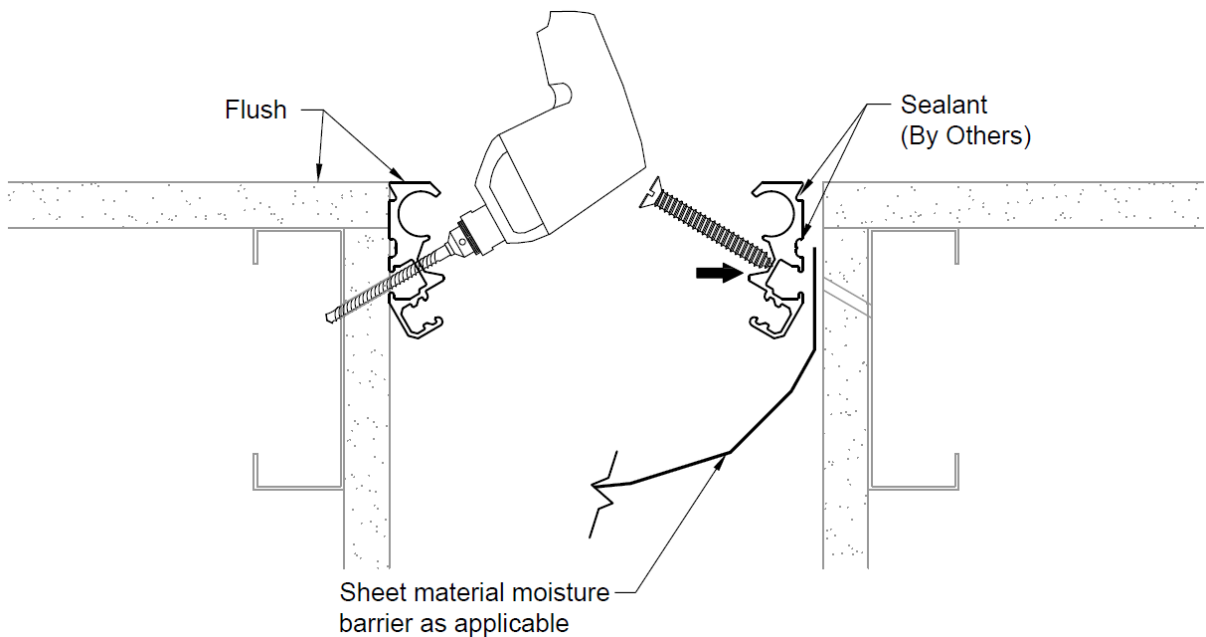
Prior to beginning work, installer shall inspect for proper wall construction. Verify joint opening is as called for on chart.



2

Place aluminum extrusion on edge of opening as shown. Drill through extrusion and drywall into stud. Apply sealant (by others) along two grooves on backside of extrusion. If installing system with sheet material for moisture barrier, place between wall and extrusion. Fasten with 1/4" x 2" screws spaced at 18" o.c. maximum, start 6" from ends.

Note: See steps 3 & 4 next page before installing all base members.

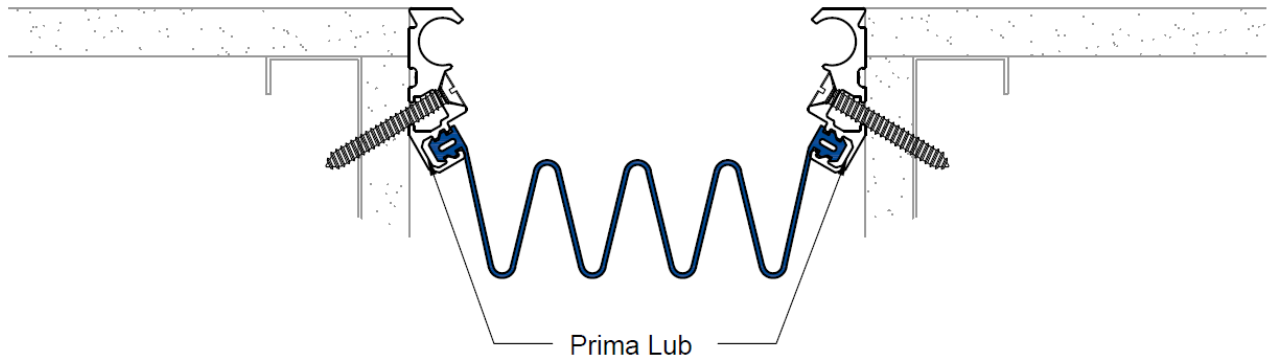


BUILDING TRUST



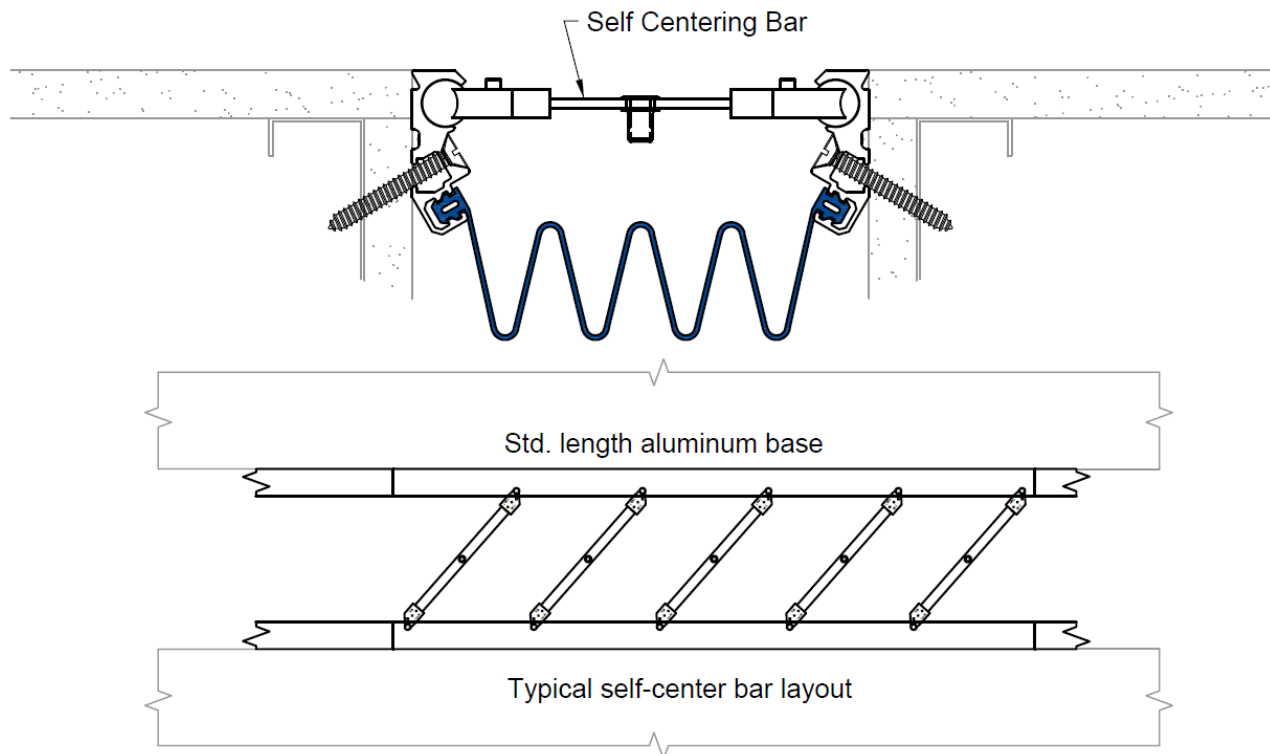
3

Brush apply Wabo®PrimaLub adhesive into extrusion cavity for the moisture barrier lug. Immediately insert moisture barrier lug into cavity, ensure full engagement.



4

As you install aluminum base member sections, slide self-center bars into circular cavities. Make sure that "TOP" indicator is facing out and that all bars are in same orientation. Utilizing duct tape or something similar, put a small strip on bar to hold spacing at 24" o.c.



BUILDING TRUST



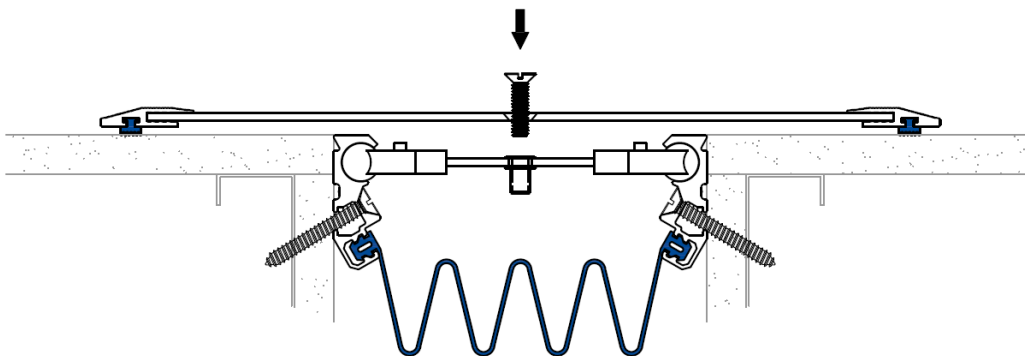
5

Slide gasket into coverplate.



6

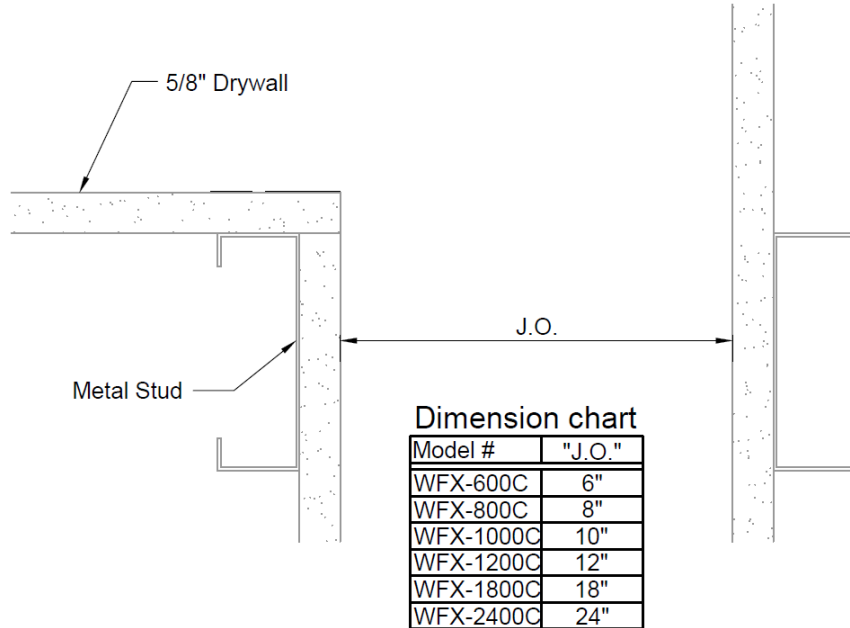
Center coverplate over joint opening, aligning the holes for the self-centering bars over the previously installed bars. Insert the 1/4" x 1 1/4" Lg. csk flathead machine screw through the cover into self-centering bars. Tighten to create measurable tension in bar.



Installation – WFX-C

1

Prior to beginning work, installer shall inspect for proper wall construction. Verify joint opening is as called for on chart.

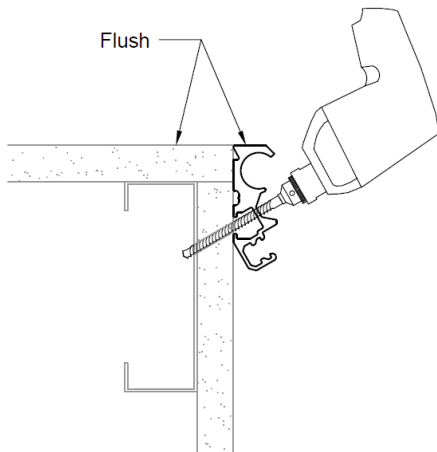


2

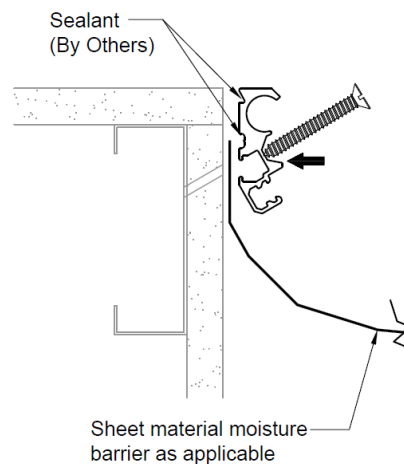
A) Place aluminum wall extrusion on edge of opening as shown. Drill through extrusion and drywall into stud.

B) Fasten with drywall screws (by others) spaced at 18" o.c. maximum, start 6" from ends. **Note:** See step 6 before installing all base members.

A)



B)



BUILDING TRUST



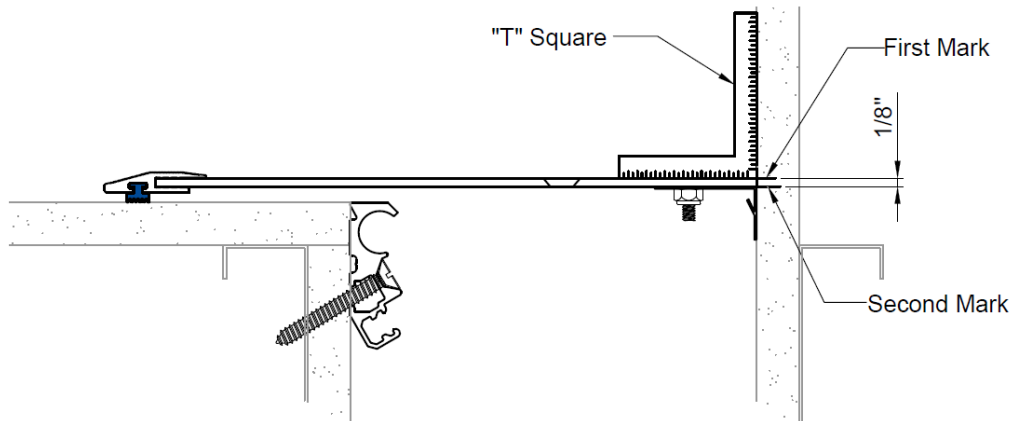
3

Slide gasket into coverplate



4

Position coverplate onto system as shown until gasket sits firmly against wall. Utilize a T-square to mark a line on wall flush with coverplate. Remove coverplate and make a second mark parallel to first but 1/8" into joint opening.

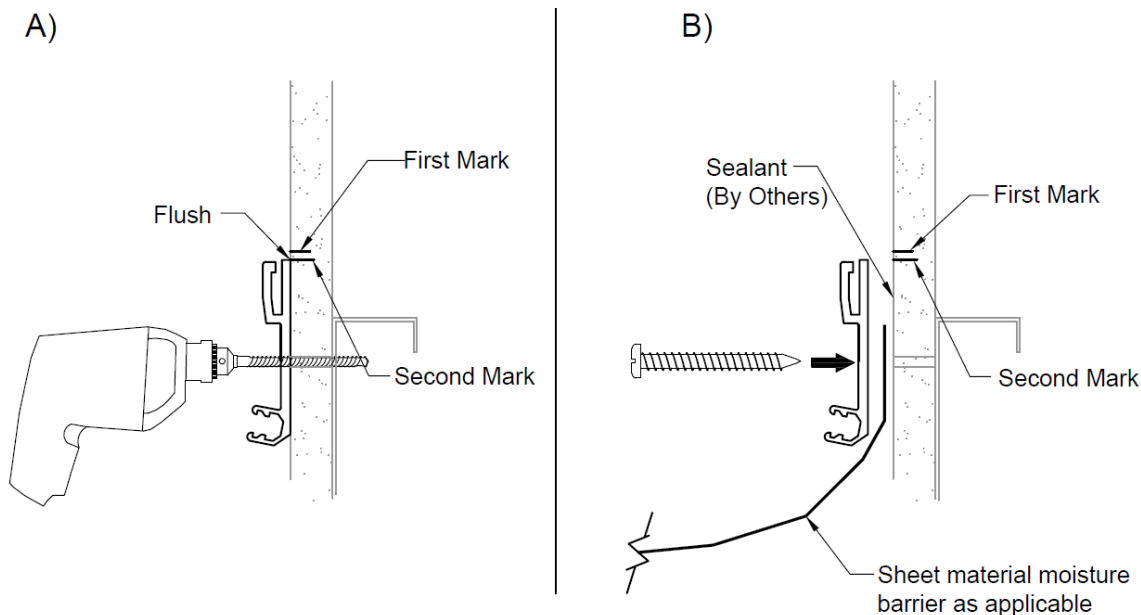


5

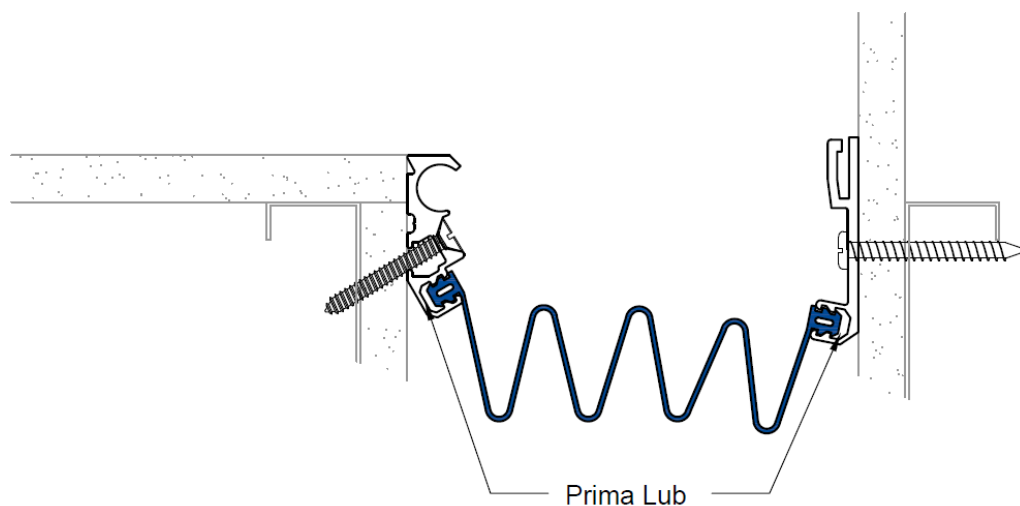
A) Position aluminum wall extrusion flush with the second line drawn. Drill through aluminum wall extrusion into adjacent wall at 18" on center.

B) Place sealant and sheet material moisture barrier as required, fasten aluminum wall extrusion to wall utilizing the supplied 1/4" x 2" screws supplied.

Note: screw must fasten into wall stud.

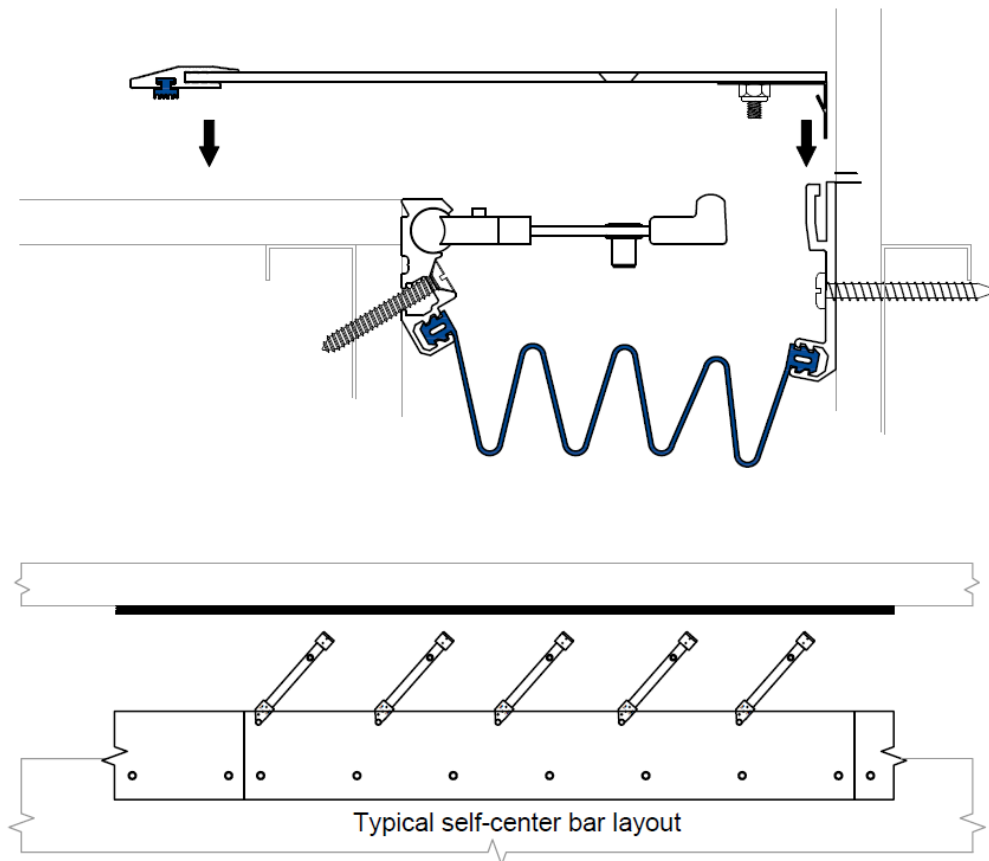
**6**

Brush apply Wabo®PrimaLub adhesive into extrusion cavity for the moisture barrier lug. Immediately insert moisture barrier lug into cavity, ensure full engagement.

**BUILDING TRUST**

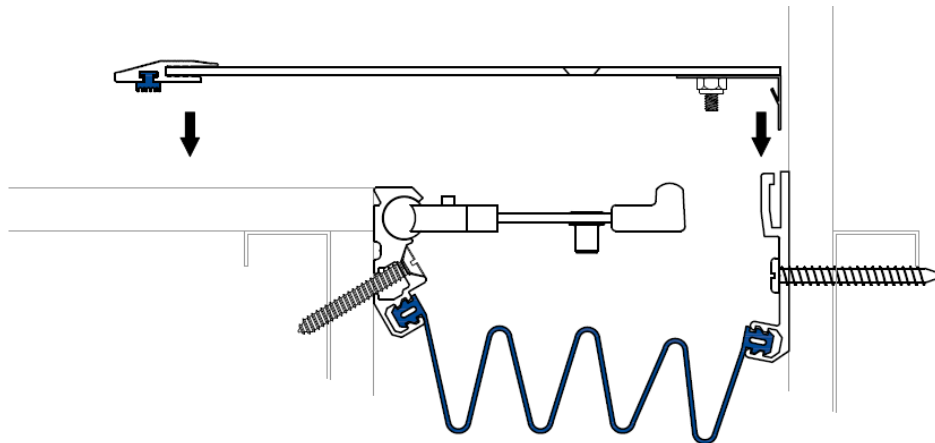
7

As you install aluminum base member sections, slide self-center bars into circular cavities. Make sure that "TOP" indicator is facing out and that all bars are in same orientation. Utilizing duct tape or something similar put a small strip on bar to hold spacing at 24" o.c.



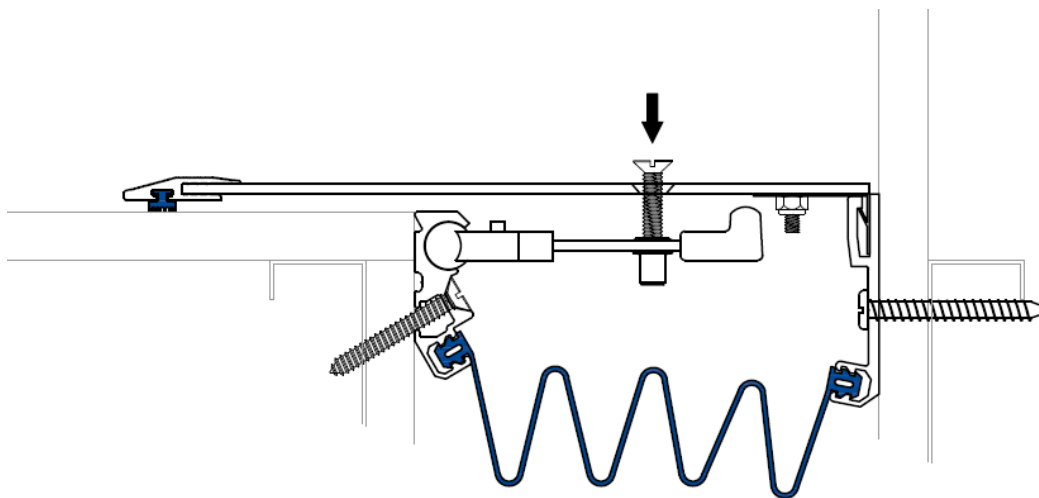
8

Snap lock coverplate with leaf spring assembly into cavity of wall mount.



9

Center coverplate over joint opening, aligning the holes for the self-centering bars over the previously installed bars. Insert the 1/4" x 1 1/4" csk flathead machine screw through the cover into self-centering bars. Tighten to create measurable tension in bar.



Information provided herein, including but not limited to, any drawing, design, photograph, graphic, or statement(s) ("Materials") are proprietary and the property of Sika Emseal ("Company"). Reproduction, translation, or reduction to any electronic medium or machine readable form, in whole or part, is strictly prohibited, except for the express purpose for which it has been furnished, without prior written consent of Company. All Materials contained herein are provided by Company for information purposes only. Company reserves the right to amend or withdraw any information contained in the Materials without notice. All technical or other advice by Company, whether verbal or written, concerning products, or the use of products in specific situations ("Advice") is given by Company and is used at the User's own risk.

Sika Emseal
25 Bridle Lane, Westborough, MA 01581 USA
Phone: 508-836-0280 / Fax 508-836-0281
www.emseal.com

Rev. 1.0 04-10-2024

