



BUILDING TRUST



Wabo®CorridorWrap WC

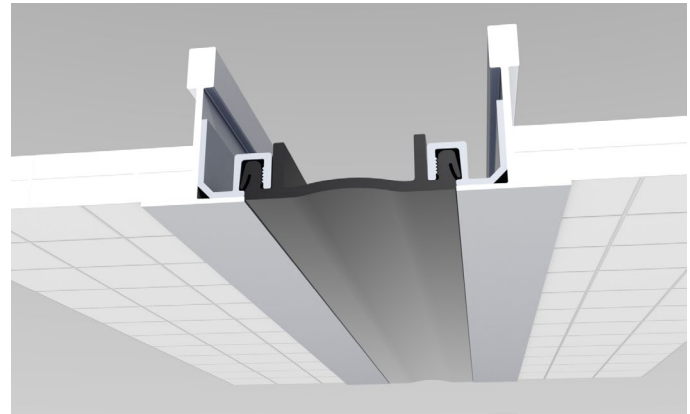
Wall and Ceiling Expansion Joint Systems

Features	Benefits
<ul style="list-style-type: none">• Durable and time tested	Limited maintenance
<ul style="list-style-type: none">• Narrow sight lines	Aesthetically attractive
<ul style="list-style-type: none">• Fast simple installation	Reduces installation time and labor costs
<ul style="list-style-type: none">• Standard flush or optional serrated seal profiles available	Versatility in product options to accommodate design and building movement

DESCRIPTION:

Wabo®CorridorWrap WC Series is a proven joint system with narrow sightlines that offers a choice of models, each of which consists of a variety of elastomeric seals and edge retainers. This variety provides a wide range of attachment solutions for wall and ceiling applications and permits selection of a system appropriate for the expected movement and project conditions including compliance with ADA guidelines.

The standard flat surface elastomeric seals provide a flush installation and are available in standard black, beige, gray and white.



RECOMMENDED FOR:

- All Interior wall, ceiling, and soffit expansion joint applications.
- For use in various construction projects including:
 - Health-Care
 - Transportation
 - Recreation
 - Retail
 - Commercial
 - Educational
 - Parking Garage (interior areas)

PACKAGING/COVERAGE:

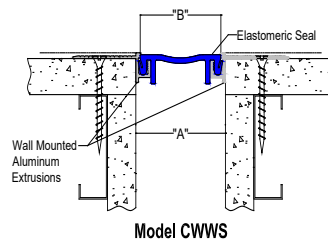
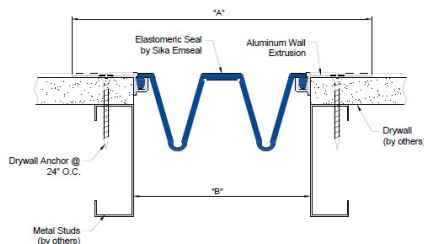
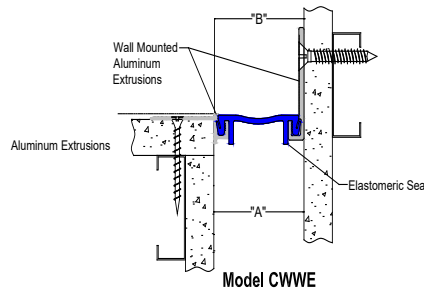
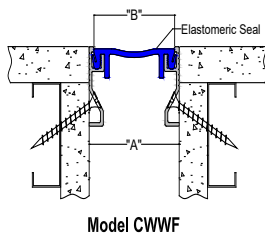
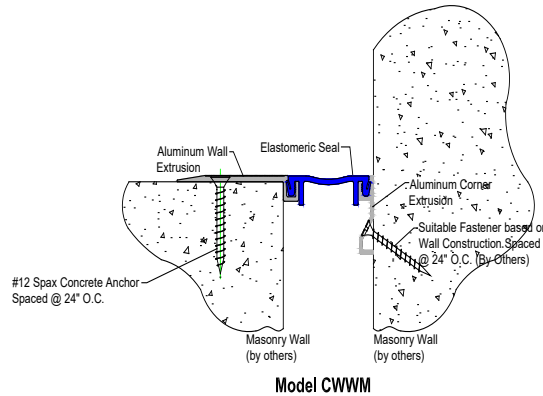
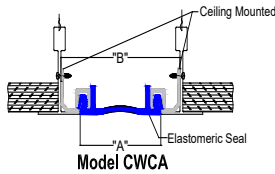
- Aluminum Profiles: bundled in standard 10-foot lengths.
- Elastomeric Seals: Shipped in longest practical continuous length (except 400-600 size seals only provided in 10-foot lengths)
- Accessories: In manufacturer's standard labeled carton.

TECHNICAL DATA:

Design Information:

WaboCorridorWrap WC is available in five different models. Models CWCA is designed to accommodate typical ceiling applications. Models CWWE, CWWF, CWWM and CWWWS have been designed to accommodate typical wall applications.

**Note: Model sizes 400-600 have a double "V" shaped seal.*



Note: see sales drawings for additional details



BUILDING TRUST



Movement Tables

Model Number	Joint Opening ("B")		System Width (@ install) "A"		Total Movement.	
	inches	mm	inches	mm	inches	mm
CWCA-100	1.00	25	1.00	25	0.50	13
CWCA-200	2.00	51	2.00	51	1.00	25
CWCA-300	3.00	76	3.00	76	1.50	38
CWCA-400	4.00	102	3.75	95	4.00	102
CWCA-500	5.00	127	4.75	121	5.00	127
CWCA-600	6.00	152	5.75	146	6.00	152
CWCA-100C	1.00	25	1.00	25	0.50	13
CWCA-200C	2.00	51	2.00	51	1.00	25
CWCA-300C	3.00	76	3.00	76	1.50	38
CWCA-400C	4.00	102	3.75	95	4.00	102
CWCA-500C	5.00	127	4.75	121	5.00	127
CWCA-600C	6.00	152	5.75	146	6.00	152

Model Number	Joint Opening ("A")		System Width (@ install) "B"		Total Movement.	
	inches	mm	inches	mm	inches	mm
CWWE-100	1.00	25	1.00	25	0.50	13
CWWE-200	2.00	51	2.00	51	1.00	25
CWWE-300	3.00	76	3.00	76	1.50	38
CWWE-400	4.00	102	4.00	102	4.00	102
CWWE-500	5.00	127	5.00	127	5.00	127
CWWE-600	6.00	152	6.00	152	6.00	152

Model Number	Joint Opening ("A")		System Width (@ install) "B"		Total Movement.	
	inches	mm	inches	mm	inches	mm
CWWM-100	1.00	25	1.00	25	0.50	13
CWWM-200	2.00	51	2.00	51	1.00	25
CWWM-300	3.00	76	3.00	76	1.50	38
CWWM-400	4.00	102	3.75	95	4.00	102
CWWM-500	5.00	127	4.75	121	5.00	127
CWWM-600	6.00	152	5.75	146	6.00	152
CWWM-100C	1.00	25	1.00	25	0.50	13
CWWM-200C	2.00	51	2.00	51	1.00	25
CWWM-300C	3.00	76	3.00	76	1.50	38
CWWM-400C	4.00	102	3.75	95	4.00	102
CWWM-500C	5.00	127	4.75	121	5.00	127
CWWM-600C	6.00	152	5.75	146	6.00	152

PHYSICAL PROPERTIES:

Extrusions: Material shall conform to properties of ASTM B221, 6063-T5 aluminum alloy. Supplied in standard mill finish.

Elastomeric Seals - Material shall be a flexible extruded polyvinyl chloride or manufacturer's alternate material exhibiting a shore A hardness of 75 with U.V. stabilizer. Standard colors: black, beige, gray except model CWCA. For CWCA, the standard color is white.

Moisture Barrier (optional): Provide fabric reinforced clear vinyl sheet material .026" (min.) thickness sized to accommodate opening.

Anchorage: Style and spacing varies according to system. All anchors for suspended ceiling or drywall applications will be supplied by installing contractor. For masonry or concrete applications manufacturer shall provide 1/4" dia. x 1 3/4" lg. (min.) hex head threaded concrete anchor.



BUILDING TRUST



APPLICATION:

INSTALLATION SUMMARY:

- Protect all expansion joint components from damage during installation and protect finished installation from damage from other trades during all work activities.
- Expansion joint systems shall be installed in accordance with manufacturer's typical details and installation procedures.
- Wall or ceiling construction and materials shall be designed to allow for proper installation of system and its components. Construct any wall recess in accordance with manufacturer's recommendations.
- Construct joint openings consistent in width and straight along joint height. Utilize double metal studs on both sides of the joint opening. Inspect and verify all substrates to be solid and sound prior to work.
- Construct all adjacent walls to be vertically flat along height and flush across both sides of the opening. Inspect and verify all substrates to be solid and sound prior to work.
- Install required gypsum wallboard inside joint opening at fire rated locations. Install appropriate fire barrier system, if required by building code and rated construction. Contact Emseal for recommendations on appropriate fire barrier system.
- Metal components shall be cut to length on job site where required. Components shall be miter cut in the field to conform to directional changes unless otherwise contracted with expansion joint manufacturer.
- All anchor holes shall be field drilled in accordance with manufacture's drawings.

FOR BEST RESULTS:

- Do not install if the joint's anticipated movement will exceed the system's movement range.
- Deliver product in each manufacturer's original, intact, labeled containers. Protect the work area with appropriate plastic sheeting.
- Do not allow any of the components to freeze prior to installation. Store all components out of direct sunlight in a clean, dry location between 50°F (10°C) and 90°F (32°C). Store off the ground and protect from weather and construction activities.
- Do not use for external locations, which require watertight expansion joint system. Contact Emseal for recommendations.
- Periodically inspect the installed material and repair localized areas as needed. Inspect for loose components and/or hardware, repair as necessary. Consult a Sika Emseal representative for additional information.
- Make certain the most current version of the product data sheet is being used. Please consult the website (www.emseal.com) or contact a customer service representative.
- Proper application is the responsibility of the user. Field visits by Sika Emseal personnel are for the purpose of making technical recommendations only and not for supervising or providing quality control on the jobsite.



RELATED DOCUMENTS:

- Material Safety Data Sheets
- Wabo®CorridorWrap Specification
- Wabo®CorridorWrap Sales Drawings
- Wabo®CorridorWrap Installation Procedure

LIMITED WARRANTY:

Emseal Joint Systems, Ltd. warrants that this product conforms to its current applicable specifications. Sika EMSEAL MAKES NO OTHER WARRANTY, EXPRESS OR IMPLIED, INCLUDING ANY WARRANTY OF MERCHANTABILITY OR WARRANTY OF FITNESS FOR A PARTICULAR PURPOSE. The sole and exclusive remedy of Purchaser for any claim concerning this product, including, but not limited to, claims alleging breach of warranty, negligence, strict liability or otherwise, is the replacement of product or refund of the purchase price, at the sole option of Emseal. Any claims concerning this product shall be submitted in writing within one year of the delivery date of this product to Purchaser and any claims not presented within that period are waived by Purchaser. IN NO EVENT SHALL Sika EMSEAL BE LIABLE FOR ANY SPECIAL, INCIDENTAL, CONSEQUENTIAL (INCLUDES LOSS OF PROFITS) OR PUNITIVE DAMAGES. Other warranties may be available when the product is installed by a factory trained installer. Contact your local Sika Emseal representative for details. The data expressed herein is true and accurate to the best of our knowledge at the time published; it is, however, subject to change without notice.

Sika Emseal
25 Bridle Lane, Westborough, MA 01581 USA
Phone: 508-836-0280 / Fax 508-836-0281
www.emseal.com

Rev. 1.2 09-06-2024



BUILDING TRUST

