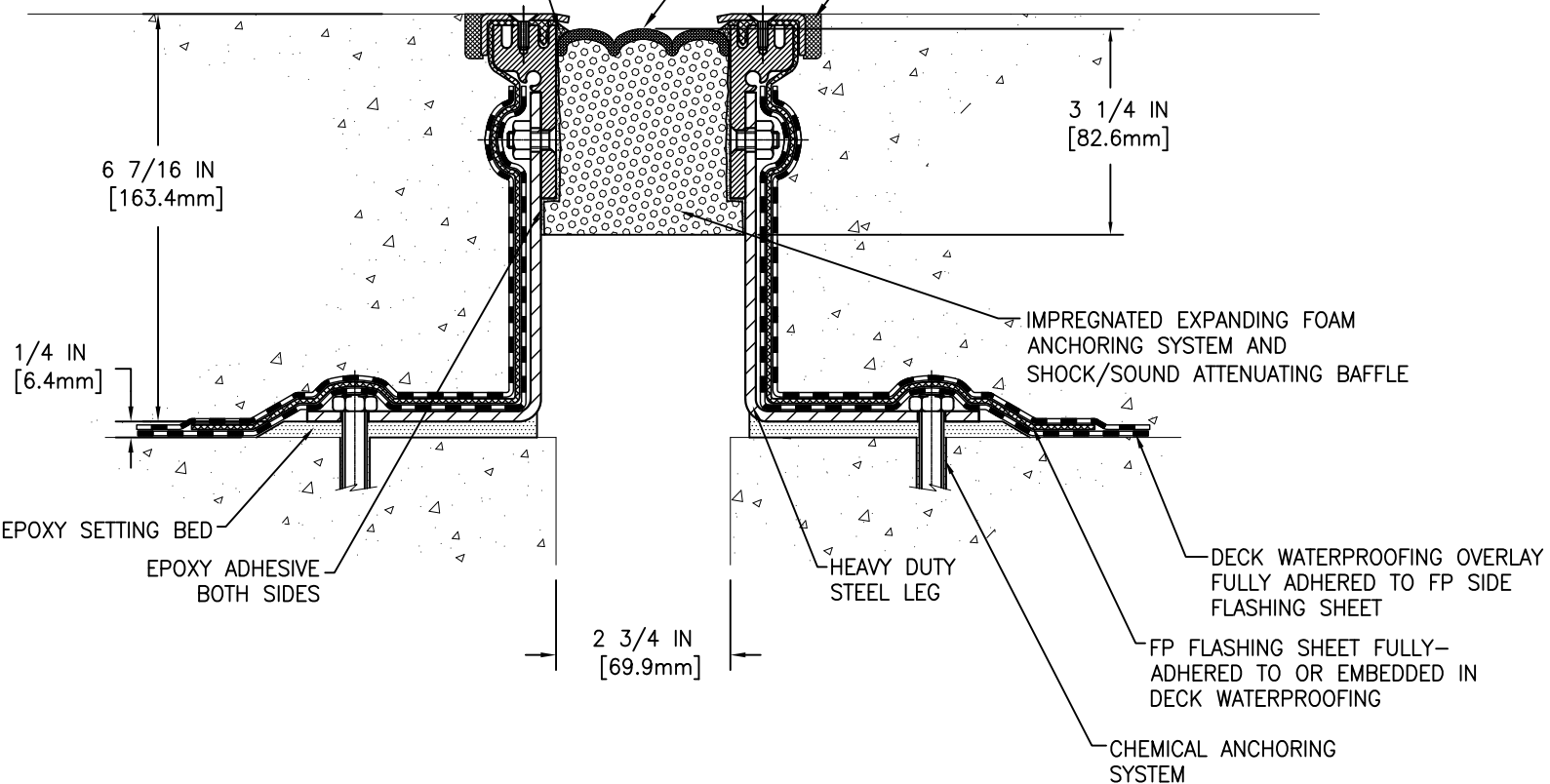


FIELD APPLIED MIN. 3/4 IN (19.1mm)
DEEP INJECTED SEALANT BAND
AND CORNER BEAD
ALONG SIDE OF DSM AS SHOWN – BOTH SIDES
(SILICONE SUPPLIED BY EMSEAL)

WATERTIGHT FACTORY APPLIED
TRAFFIC-GRADE SILICONE BELLOWS

SELF LEVELING TRAFFIC GRADE
SEALANT CONTROL JOINT – BY OTHERS



MOVEMENT: 50%
+ 1 3/8 IN (35mm)
- 1 3/8 IN (35mm)

EMSEAL JOINT SYSTEMS LTD.

DSM-FP-0275-165 DECK TO DECK EXPANSION JOINT

THIS DOCUMENT CONTAINS INFORMATION OF A CONFIDENTIAL NATURE AND IS PROPRIETARY TO EMSEAL JOINT SYSTEMS LTD. ANY UNAUTHORIZED USE WILL BE PROSECUTED. THIS DRAWING IS PROTECTED BY COPYRIGHT, THE RIGHT TO REPRODUCE IN ANY FORM BEING THE EXCLUSIVE RIGHT OF EMSEAL JOINT SYSTEMS LTD. ANY UNAUTHORIZED REPRODUCTION WHETHER IN TWO OR THREE DIMENSIONS WILL BE PROSECUTED. © 2014 EMSEAL JOINT SYSTEMS LTD.

| | | | |
|-----------|------------|--------|------------|
| DRAWN BY: | DATE: | SCALE: | SHEET |
| SWR | 2015/09/29 | N.T.S. | No. 1 OF 1 |

PART NUMBER:

DSM_FP_0275_165_DD_CONC