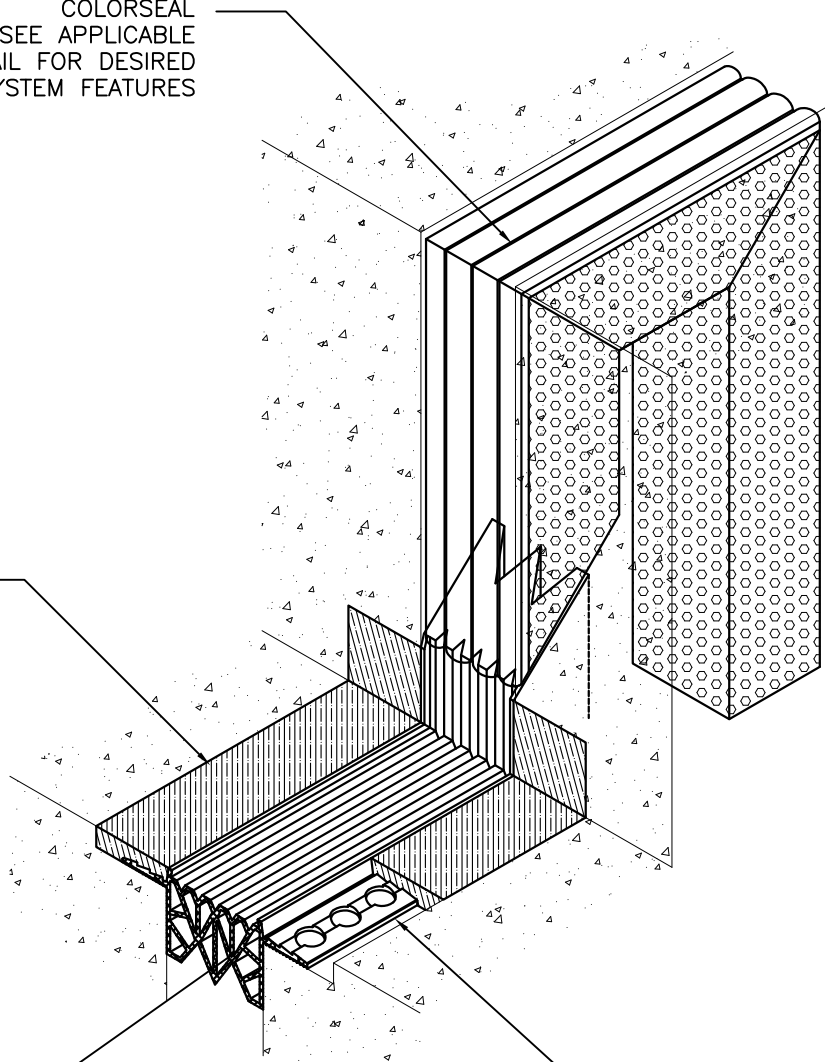


COLORSEAL
SEE APPLICABLE
DETAIL FOR DESIRED
SIZE AND SYSTEM FEATURES

EMCRETE ELASTOMERIC
NOSING MATERIAL

THERMAFLEX TCR 400
MULTI-BARRIER HEAT WELDABLE
SANTOPRENE GLAND

PERFORATED FLANGES
ENCAPSULATED IN
NOSING MATERIAL



EMSEAL JOINT SYSTEMS LTD.

THERMAFLEX TCR-400 90° TRANSITION TO COLORSEAL

THIS DOCUMENT CONTAINS INFORMATION OF A CONFIDENTIAL NATURE AND IS PROPRIETARY TO EMSEAL JOINT SYSTEMS LTD. ANY UNAUTHORIZED USE WILL BE PROSECUTED. THIS DRAWING IS PROTECTED BY COPYRIGHT, THE RIGHT TO REPRODUCE IN ANY FORM BEING THE EXCLUSIVE RIGHT OF EMSEAL JOINT SYSTEMS LTD. ANY UNAUTHORIZED REPRODUCTION WHETHER IN TWO OR THREE DIMENSIONS WILL BE PROSECUTED. © 2014 EMSEAL JOINT SYSTEMS LTD.

DRAWN BY:	DATE:	SCALE:	SHEET
JDO	2014/05/28	N.T.S.	No: 1 OF 1

PART NUMBER:
TCR_400_DD_CONC_VTRAN_UPTURN_TO_FOAM_ISO