

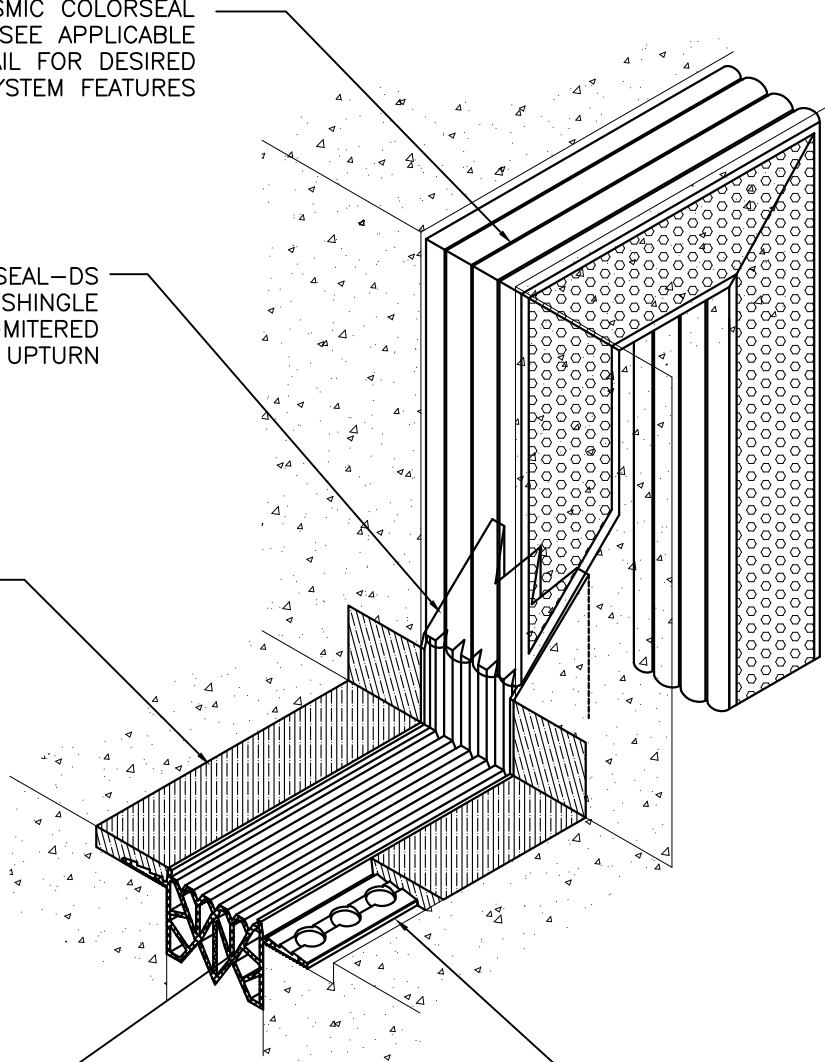
SEISMIC COLORSEAL
SEE APPLICABLE
DETAIL FOR DESIRED
SIZE AND SYSTEM FEATURES

SEISMIC COLORSEAL-DS
NOTCHED IN FIELD TO SHINGLE
OVER TCR-FACTORY-MITERED
UPTURN

EMCRETE ELASTOMERIC
NOSING MATERIAL

THERMAFLEX TCR 400
MULTI-BARRIER HEAT WELDABLE
SANTOPRENE GLAND

PERFORATED FLANGES
ENCAPSULATED IN
NOSING MATERIAL



EMSEAL JOINT SYSTEMS LTD.

SEISMIC COLORSEAL-DS TO THERMAFLEX TCR TRANSITION

THIS DOCUMENT CONTAINS INFORMATION OF A CONFIDENTIAL NATURE AND IS PROPRIETARY TO EMSEAL JOINT SYSTEMS LTD. ANY UNAUTHORIZED USE WILL BE PROSECUTED. THIS DRAWING IS PROTECTED BY COPYRIGHT, THE RIGHT TO REPRODUCE IN ANY FORM BEING THE EXCLUSIVE RIGHT OF EMSEAL JOINT SYSTEMS LTD. ANY UNAUTHORIZED REPRODUCTION WHETHER IN TWO OR THREE DIMENSIONS WILL BE PROSECUTED. © 2014 EMSEAL JOINT SYSTEMS LTD.

DRAWN BY:	DATE:	SCALE:	SHEET
JNM	2014/06/16	N.T.S.	No: 1 OF 1

PART NUMBER:
TCR_400_DD_CONC_VTRAN_UPTURN_TO_CLRSL-DS