

EMSEAL COLORSEAL OR  
SIESMIC COLORSEAL EXPANDING  
FOAM SEALANT

APPLY THIN FILLET BEAD OF  
SEALANT TO TOP OF  
RETAINER BAR – BY  
OTHERS

SANTOPRENE SHEET WELDED TO  
FLANGE OR UNPUNCHED FLANGE  
TURNED UP WALL

SANTOPRENE SHEET  
CORNER-PIECE CONNECTS  
DECK & WALL FLANGES

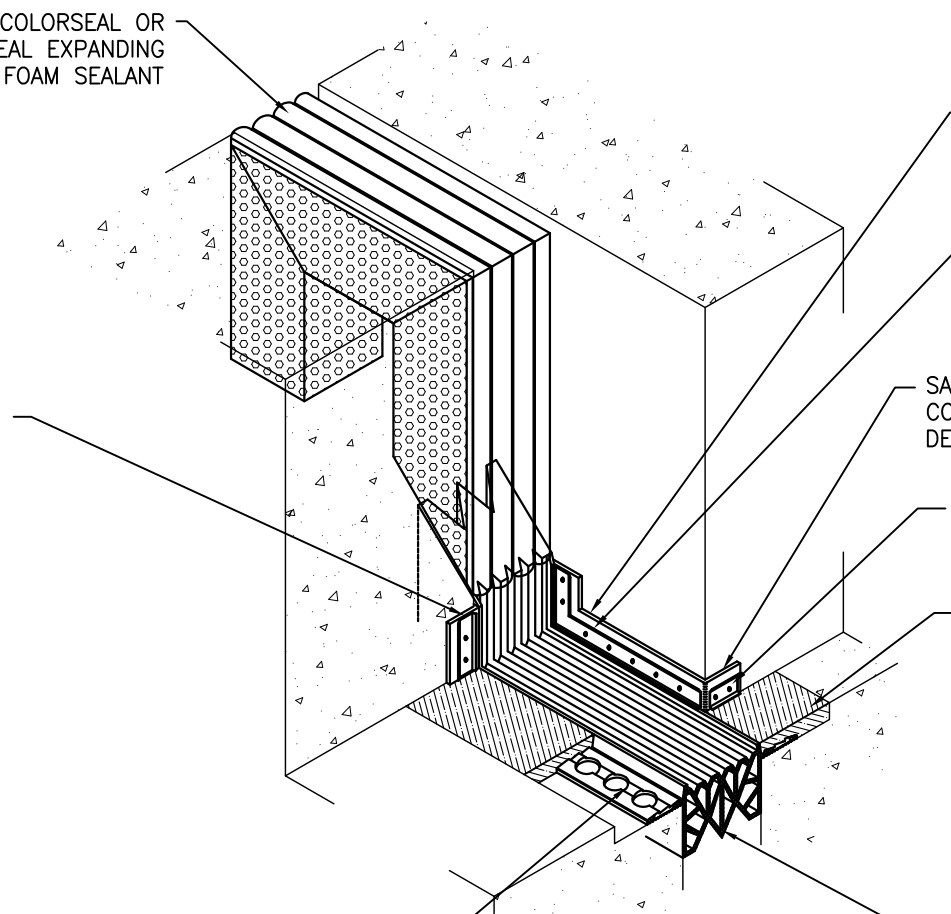
MECHANICALLY ANCHORED TERM  
BAR AROUND CORNER OF WALL

PLATE LEVELING AND SOUND  
DAMPENING EMCRETE ELASTOMERIC  
NOSING MATERIAL

TCR 400 FLANGE SURFACE  
MOUNTED ON VERTICAL  
FACE AND MECHNICALLY  
ANCHORED WITH TERM BAR  
AND SEALED WITH FIELD  
APPLIED WET SEALANT –  
BY OTHERS

PERFORATED FLANGES  
ENCAPSULATED IN  
NOSING MATERIAL

THERMAFLEX TCR 400  
MULTI-BARRIER HEAT WELDABLE  
SANTOPRENE GLAND



# EMSEAL JOINT SYSTEMS LTD.

## THERMAFLEX TCR 400 TO DECK TO WALL COLORSEAL TRANSITION

THIS DOCUMENT CONTAINS INFORMATION OF A CONFIDENTIAL NATURE AND IS PROPRIETARY TO EMSEAL JOINT SYSTEMS LTD. ANY UNAUTHORIZED USE WILL BE PROSECUTED. THIS DRAWING IS PROTECTED BY COPYRIGHT, THE RIGHT TO REPRODUCE IN ANY FORM BEING THE EXCLUSIVE RIGHT OF EMSEAL JOINT SYSTEMS LTD. ANY UNAUTHORIZED REPRODUCTION WHETHER IN TWO OR THREE DIMENSIONS WILL BE PROSECUTED. © 2014 EMSEAL JOINT SYSTEMS LTD.

DRAWN BY: NER	DATE: 2014/06/03	SCALE: N.T.S.	SHEET No: 1 OF 1
PART NUMBER:		TCR_400_DD_CONC_HTRAN_VTRAN_DD_ TO_DW_TO_SURFACE_MOUNTED_UPTURN_ISO	