

FACTORY-APPLIED AND CURED  
TRAFFIC-GRADE SILICONE FACING  
(PECORA 301) (TYP)

STAINLESS STEEL  
CAPPING STRIP

FP RETAINER

FIELD APPLIED MIN. 3/4 IN (19.1mm)  
DEEP INJECTED SEALANT BAND AND CORNER BEAD  
ALONG SIDE OF DFR2 AS SHOWN (BOTH SIDES)  
(SILICONE SUPPLIED BY EMSEAL)

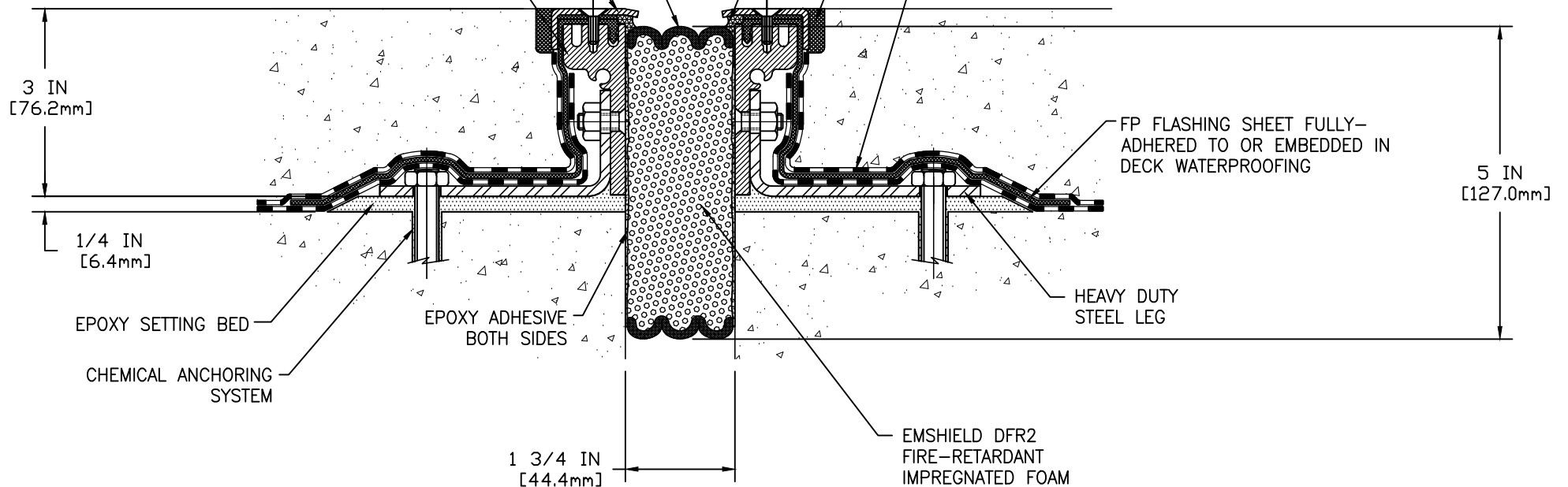
SELF LEVELING TRAFFIC GRADE  
SEALANT CONTROL JOINT - BY OTHERS

DECK WATERPROOFING OVERLAY  
FULLY ADHERED TO FP SIDE  
FLASHING SHEET



System # FF-D-0081

System # JF147



FP FLASHING SHEET FULLY-  
ADHERED TO OR EMBEDDED IN  
DECK WATERPROOFING

HEAVY DUTY  
STEEL LEG

EMSHIELD DFR2  
FIRE-RETARDANT  
IMPREGNATED FOAM

MOVEMENT:  $\pm 50\%$   
+ 7/8 IN (22mm)  
- 7/8 IN (22mm)

EMSEAL'S EMSHIELD DFR2-FP HAS BEEN TESTED IN ACCORDANCE WITH UL 2079 IN THE CONFIGURATION DEPICTED IN SYSTEM # FF-D-0081. USE OF THIS MATERIAL IN WALL ASSEMBLY CONFIGURATIONS OTHER THAN THAT DEPICTED IN UL SYSTEM # FF-D-0081 WILL NOT ENCUMBER OR LOWER THE RESISTANCE OF THE WALL BUT IS DONE SO AT THE DESIGNERS' DISCRETION AND RESPONSIBILITY FOR DESIGN OF A FIRE RATED WALL ASSEMBLY THAT MEETS APPLICABLE STANDARDS FOR THE PROJECT AND WHICH ADDITIONALLY IS CAPABLE OF RESISTING THE APPROXIMATELY 2.5 PSI (120 LBS PER FOOT OF JOINT BASED ON 4-INCH DEPTH OF SEAL) BACKPRESSURE OF THE DFR2-FP MATERIAL.

## EMSEAL JOINT SYSTEMS LTD.

### DFR2-FP-0175-75 DECK TO DECK EXPANSION JOINT

THIS DOCUMENT CONTAINS INFORMATION OF A CONFIDENTIAL NATURE AND IS PROPRIETARY TO EMSEAL JOINT SYSTEMS LTD. ANY UNAUTHORIZED USE WILL BE PROSECUTED. THIS DRAWING IS PROTECTED BY COPYRIGHT, THE RIGHT TO REPRODUCE IN ANY FORM BEING THE EXCLUSIVE RIGHT OF EMSEAL JOINT SYSTEMS LTD. ANY UNAUTHORIZED REPRODUCTION WHETHER IN TWO OR THREE DIMENSIONS WILL BE PROSECUTED. © 2014 EMSEAL JOINT SYSTEMS LTD.

DRAWN BY: SPA	DATE: 2015/09/01	SCALE: N.T.S.	SHEET No: 1 OF 1
------------------	---------------------	------------------	---------------------

PART NUMBER:  
DFR2\_FP\_0175\_75\_DD\_CONC