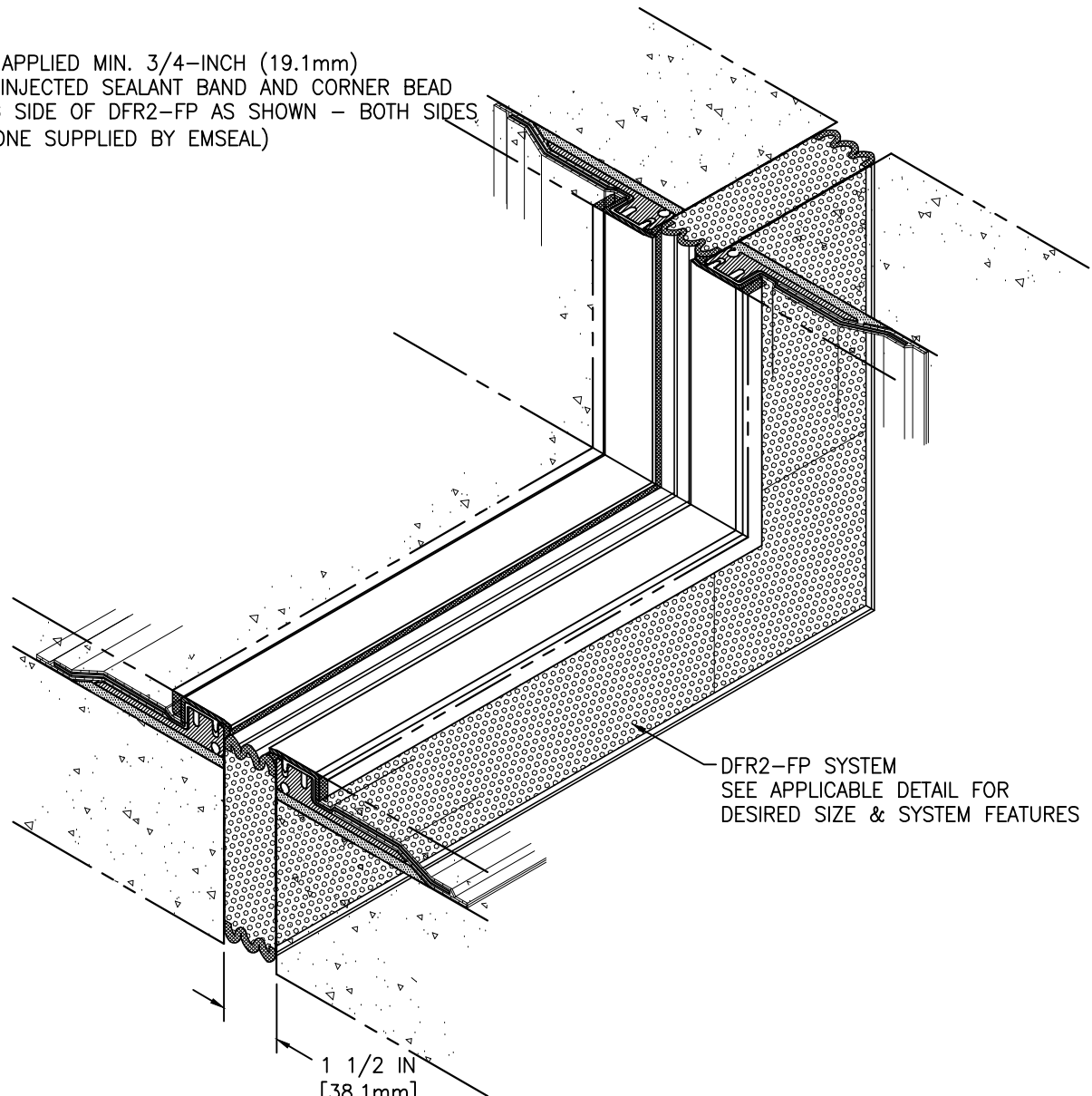
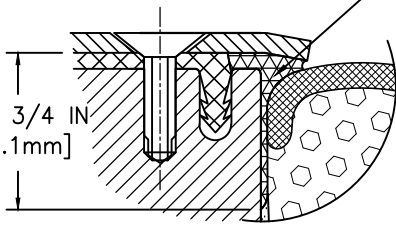


FIELD APPLIED MIN. 3/4-INCH (19.1mm)  
 DEEP INJECTED SEALANT BAND AND CORNER BEAD  
 ALONG SIDE OF DFR2-FP AS SHOWN - BOTH SIDES  
 (SILICONE SUPPLIED BY EMSEAL)

APP. 3/4 IN  
 [19.1mm]



DFR2-FP SYSTEM  
 SEE APPLICABLE DETAIL FOR  
 DESIRED SIZE & SYSTEM FEATURES

1 1/2 IN  
 [38.1mm]

MOVEMENT: ±50% (TOTAL 100%) OF NOMINAL MATERIAL SIZE

EMSEAL'S EMSHIELD DFR2-FP HAS BEEN TESTED IN ACCORDANCE WITH UL 2079 IN THE CONFIGURATION DEPICTED IN SYSTEM # FF-D-0081. USE OF THIS MATERIAL IN WALL ASSEMBLY CONFIGURATIONS OTHER THAN THAT DEPICTED IN UL SYSTEM # FF-D-0081 WILL NOT ENCUMBER OR LOWER THE RESISTANCE OF THE WALL BUT IS DONE SO AT THE DESIGNER'S DISCRETION AND RESPONSIBILITY FOR DESIGN OF A FIRE RATED WALL ASSEMBLY THAT MEETS APPLICABLE STANDARDS FOR THE PROJECT AND WHICH ADDITIONALLY IS CAPABLE OF RESISTING THE APPROXIMATELY 2.5 PSI (120 LBS PER FOOT OF JOINT BASED ON 4-INCH DEPTH OF SEAL) BACKPRESSURE OF THE DFR2-FP MATERIAL.

# EMSEAL JOINT SYSTEMS LTD.

## EMSHIELD DFR2-FP-0150 INSIDE VERTICAL PLANE UNIVERSAL-90

THIS DOCUMENT CONTAINS INFORMATION OF A CONFIDENTIAL NATURE AND IS PROPRIETARY TO EMSEAL JOINT SYSTEMS LTD. ANY UNAUTHORIZED USE WILL BE PROSECUTED. THIS DRAWING IS PROTECTED BY COPYRIGHT, THE RIGHT TO REPRODUCE IN ANY FORM BEING THE EXCLUSIVE RIGHT OF EMSEAL JOINT SYSTEMS LTD. ANY UNAUTHORIZED REPRODUCTION WHETHER IN TWO OR THREE DIMENSIONS WILL BE PROSECUTED. © 2014 EMSEAL JOINT SYSTEMS LTD.

DRAWN BY: SPA	DATE: 2015/10/01	SCALE: N.T.S.	SHEET No: 1 OF 1
PART NUMBER: DFR2_FP_0150_25_U-90_UPTURN			