

FACTORY-APPLIED AND CURED
TRAFFIC-GRADE SILICONE FACING
(PECORA 301) (TYP)

STAINLESS STEEL
CAPPING STRIP

FP RETAINER

FIELD APPLIED MIN. 3/4 IN (19.1mm)
DEEP INJECTED SEALANT BAND AND CORNER BEAD
ALONG SIDE OF DFR2 AS SHOWN (BOTH SIDES)
(SILICONE SUPPLIED BY EMSEAL)

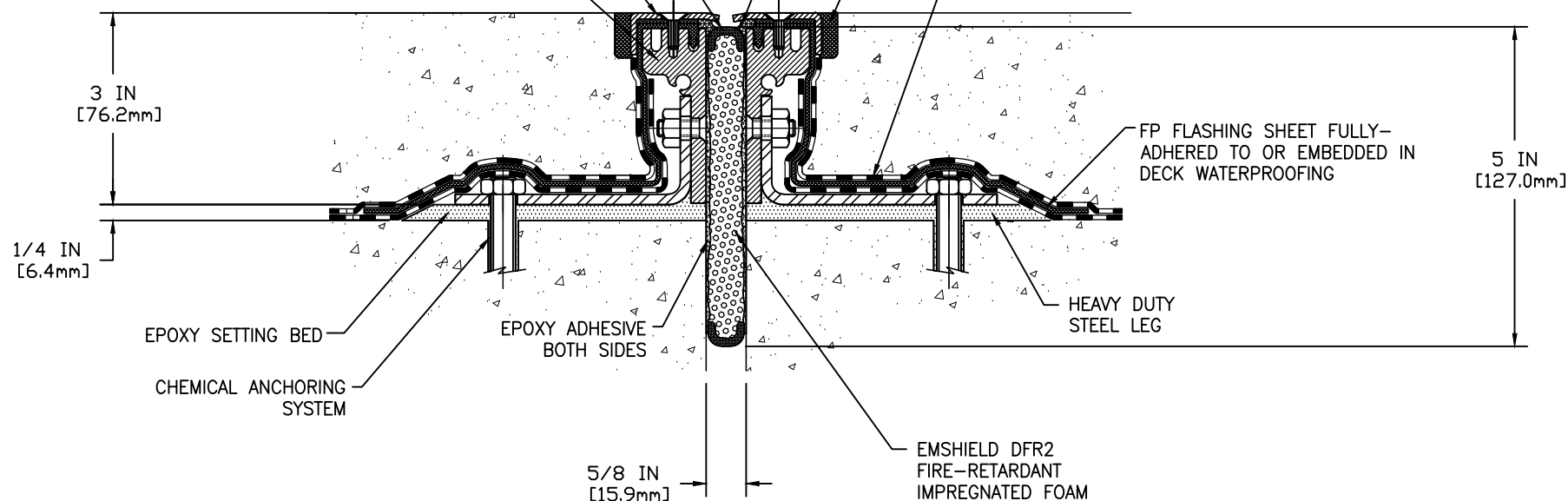
SELF LEVELING TRAFFIC GRADE
SEALANT CONTROL JOINT - BY OTHERS

DECK WATERPROOFING OVERLAY
FULLY ADHERED TO FP SIDE
FLASHING SHEET



System # FF-D-0081

System # JF147



1/4 IN
[6.4mm]

EPOXY SETTING BED

CHEMICAL ANCHORING
SYSTEM

EPOXY ADHESIVE
BOTH SIDES

5/8 IN
[15.9mm]

EMSHIELD DFR2
FIRE-RETARDANT
IMPREGNATED FOAM

HEAVY DUTY
STEEL LEG

FP FLASHING SHEET FULLY-
ADHERED TO OR EMBEDDED IN
DECK WATERPROOFING

5 IN
[127.0mm]

MOVEMENT: $\pm 50\%$
+ 5/16 IN (8mm)
- 5/16 IN (8mm)

EMSEAL'S EMSHIELD DFR2-FP HAS BEEN TESTED IN ACCORDANCE WITH UL 2079 IN THE CONFIGURATION DEPICTED IN SYSTEM # FF-D-0081. USE OF THIS MATERIAL IN WALL ASSEMBLY CONFIGURATIONS OTHER THAN THAT DEPICTED IN UL SYSTEM # FF-D-0081 WILL NOT ENCUMBER OR LOWER THE RESISTANCE OF THE WALL BUT IS DONE SO AT THE DESIGNER'S DISCRETION AND RESPONSIBILITY FOR DESIGN OF A FIRE RATED WALL ASSEMBLY THAT MEETS APPLICABLE STANDARDS FOR THE PROJECT AND WHICH ADDITIONALLY IS CAPABLE OF RESISTING THE APPROXIMATELY 2.5 PSI (120 LBS PER FOOT OF JOINT BASED ON 4-INCH DEPTH OF SEAL) BACKPRESSURE OF THE DFR2-FP MATERIAL.

EMSEAL JOINT SYSTEMS LTD.

DFR2-FP-0063-75 DECK TO DECK EXPANSION JOINT

THIS DOCUMENT CONTAINS INFORMATION OF A CONFIDENTIAL NATURE AND IS PROPRIETARY TO EMSEAL JOINT SYSTEMS LTD. ANY UNAUTHORIZED USE WILL BE PROSECUTED. THIS DRAWING IS PROTECTED BY COPYRIGHT, THE RIGHT TO REPRODUCE IN ANY FORM BEING THE EXCLUSIVE RIGHT OF EMSEAL JOINT SYSTEMS LTD. ANY UNAUTHORIZED REPRODUCTION WHETHER IN TWO OR THREE DIMENSIONS WILL BE PROSECUTED. © 2014 EMSEAL JOINT SYSTEMS LTD.

DRAWN BY:	DATE:	SCALE:	SHEET
SPA	2015/08/31	N.T.S.	No: 1 OF 1
PART NUMBER:			
DFR2_FP_0063_75_DD_CONC			