



System No. WW-D-1158 XHBN.WW-D-1158 Joint Systems

Page Bottom

Design/System/Construction/Assembly Usage Disclaimer

- Authorities Having Jurisdiction should be consulted in all cases as to the particular requirements covering the installation and use of UL Certified products, equipment, system, devices, and materials.
- Authorities Having Jurisdiction should be consulted before construction.
- Fire resistance assemblies and products are developed by the design submitter and have been investigated by UL for compliance with applicable requirements. The published information cannot always address every construction nuance encountered in the field.
- When field issues arise, it is recommended the first contact for assistance be the technical service staff provided by the product manufacturer noted for the design. Users of fire resistance assemblies are advised to consult the general Guide Information for each product category and each group of assemblies. The Guide Information includes specifics concerning alternate materials and alternate methods of construction.
- Only products which bear UL's Mark are considered Certified.

XHBN - Joint Systems

XHBN7 - Joint Systems Certified for Canada

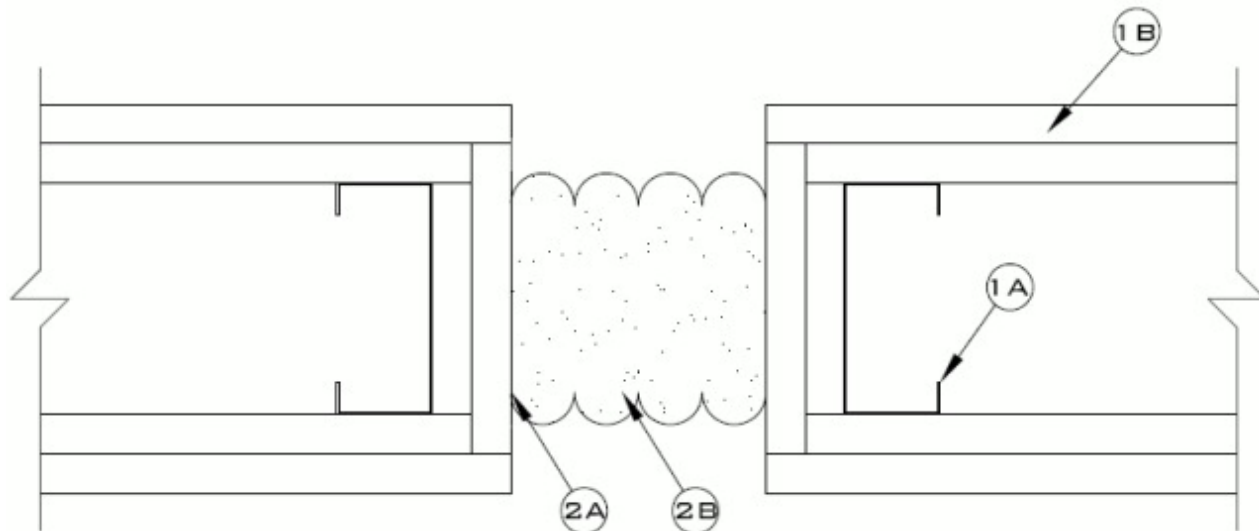
[See General Information for Joint Systems](#)

[See General Information for Joint Systems Certified for Canada](#)

System No. WW-D-1158

September 11, 2014

ANSI/UL2079	CAN/ULC S115
Assembly Rating — 1 or 2 Hr	F Rating — 1 or 2 Hr
Nominal Joint Width — 2-4 in. (51-102 mm)	FT Rating — 1 or 2 Hr
Class II and III Movement Capabilities — 50% Compression or Extension	FH Rating — 1 or 2 Hr
	FTH Rating — 1 or 2 Hr
	Nominal Joint Width — 2-4 in. (51-102 mm)
	Class II and III Movement Capabilities — 50% Compression or Extension



1. **Wall Assembly** — The 1 or 2 hr fire rated gypsum wallboard/steel stud wall assembly shall be constructed of the materials and in the manner described in the individual U300, U400, V400 or W400 -Series Wall or Partition Design in the UL Fire Resistance Directory and shall include the following construction features:

A. **Studs** — Wall framing may consist of either wood studs or steel channel studs. Wood studs to consist of nom 2 by 4 in.(50 by 100 mm) (or larger) lumber spaced 16 in. (400 mm) OC. Steel studs to be min 3-5/8 in. (92 mm) wide and spaced max 24 in. (610 mm) OC.

B. **Gypsum Board*** — Wallboard sheets to be installed to a min total thickness of 5/8 (15.9 mm) or 1-1/4 in. (31.75 mm) on each side of the wall for a 1 or 2 hr rated assemblies, respectively. Additional wallboard sheets installed to a min total thickness of 5/8 (16 mm), 1-1/4 in. (32 mm) or 1-7/8 in. (48 mm) within the opening on each side of opening for a 1, 2 or 3 hr rated assemblies, respectively. The hourly fire rating of the joint system is dependent on the hourly fire rating of the wall.

2. **Joint System** — Nominal width of joint is 4 in. (102 mm). The joint system is designed to accommodate a max 50 percent compression or extension from its installed width. The joint system shall consist of the following:

A. **Epoxy Adhesive** — Consists of two parts; part A (base), and part B (hardener). The epoxy is supplied by joint system manufacturer, and installed in accordance with accompanying installation instructions.

B. **Mechanical Joint Assembly*** — Compressed, fire-retardant impregnated 3-3/4 in. (95 mm) thick foam. Foam is installed in joint opening as a permanent form.

EMSEAL L L C — WFR2

*** Indicates such products shall bear the UL or cUL Certification Mark for jurisdictions employing the UL or cUL Certification (such as Canada), respectively.**

Last Updated on 2014-09-11

[Questions?](#)

[Print this page](#)

[Terms of Use](#)

[Page Top](#)

© 2017 UL LLC

The appearance of a company's name or product in this database does not in itself assure that products so identified have been manufactured under UL's Follow-Up Service. Only those products bearing the UL Mark should be considered to be Certified and covered under UL's Follow-Up Service. Always look for the Mark on the product.

UL permits the reproduction of the material contained in the Online Certification Directory subject to the following conditions: 1. The Guide Information, Assemblies, Constructions, Designs, Systems, and/or Certifications (files) must be presented in their entirety and in a non-misleading manner, without any manipulation of the data (or drawings). 2. The statement "Reprinted from the Online Certifications Directory with permission from UL" must appear adjacent to the extracted material. In addition, the reprinted material must include a copyright notice in the following format: "© 2017 UL LLC".