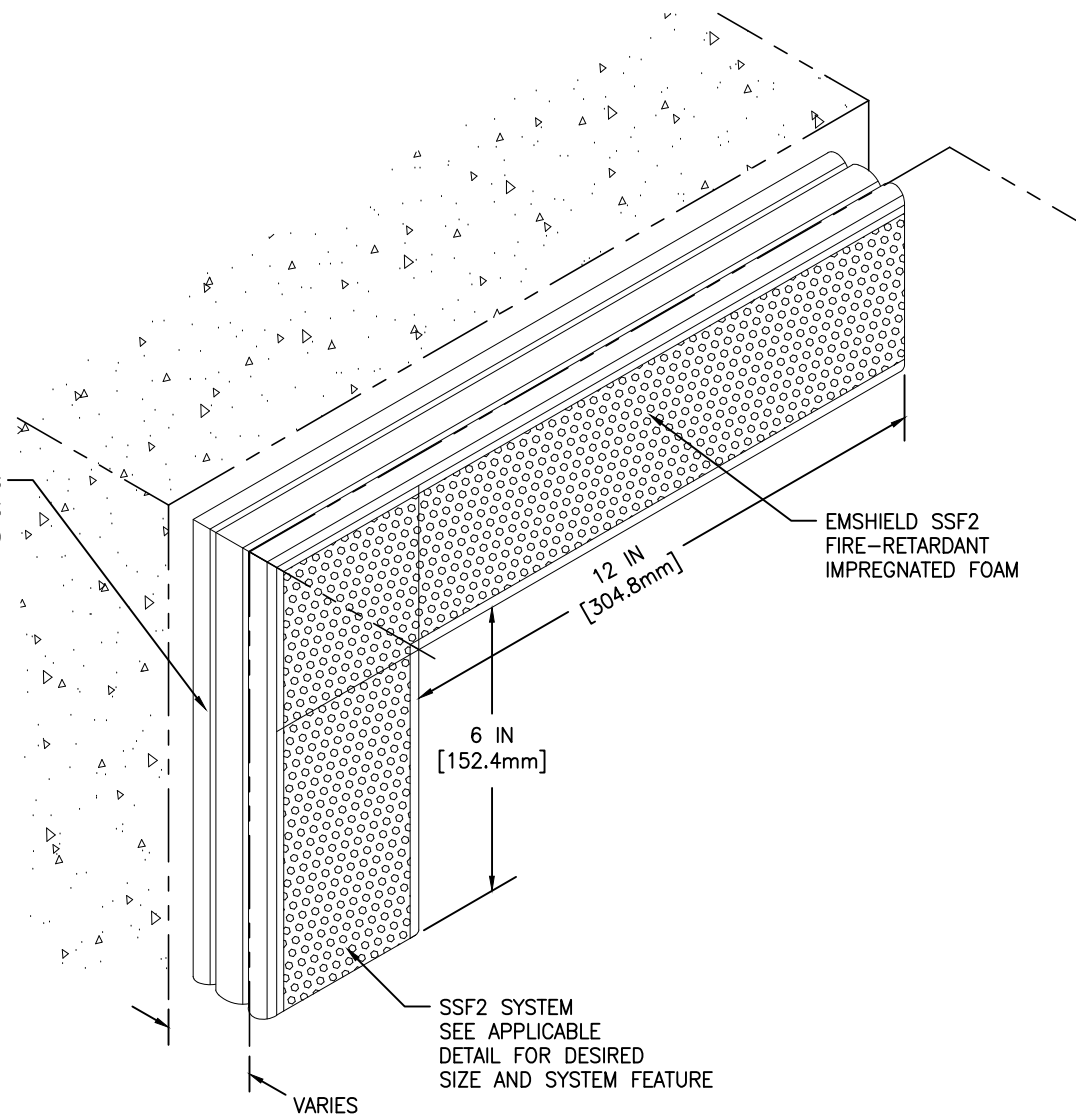


FACTORY-APPLIED POLYURETHANE FACING  
(NUMBER OF BELLOWS VARIES  
WITH NOMINAL MATERIAL SIZE)



MOVEMENT:  $\pm 50\%$  (TOTAL 100%) OF NOMINAL MATERIAL SIZE

## EMSEAL JOINT SYSTEMS LTD.

### EMSHIELD SSF2 UNIVERSAL 90 DOWNTURN - TYPICAL

THIS DOCUMENT CONTAINS INFORMATION OF A CONFIDENTIAL NATURE AND IS PROPRIETARY TO EMSEAL JOINT SYSTEMS LTD. ANY UNAUTHORIZED USE WILL BE PROSECUTED. THIS DRAWING IS PROTECTED BY COPYRIGHT, THE RIGHT TO REPRODUCE IN ANY FORM BEING THE EXCLUSIVE RIGHT OF EMSEAL JOINT SYSTEMS LTD. ANY UNAUTHORIZED REPRODUCTION WHETHER IN TWO OR THREE DIMENSIONS WILL BE PROSECUTED. © 2014 EMSEAL JOINT SYSTEMS LTD.

DRAWN BY:	DATE:	SCALE:	SHEET
ORK	2016/09/07	N.T.S.	No: 1 OF 1
PART NUMBER:			
SSF2_U-90_DOWNTURN_TYPICAL			