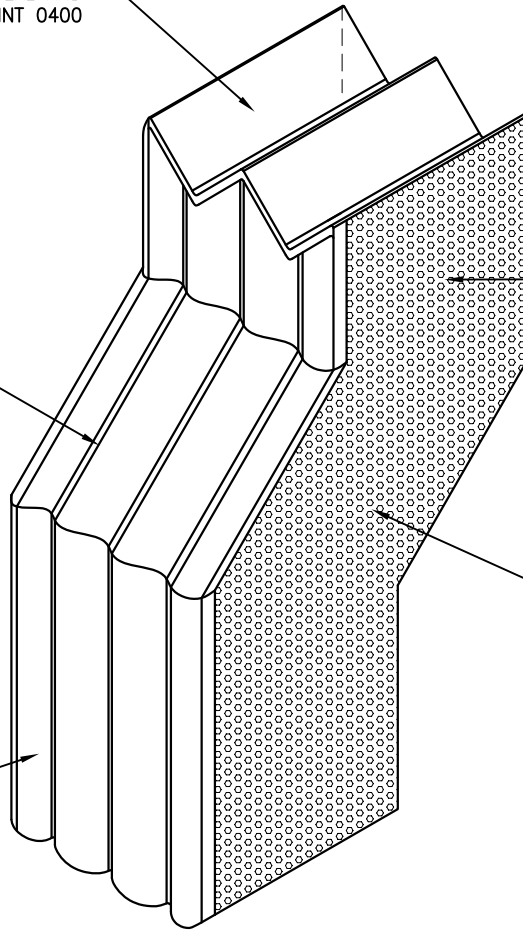


V NOTCHES CUT INTO SEISMIC COLORSEAL AND SEALED WITH SILICONE TO MATCH ROOFJOINT 0400

SEISMIC COLORSEAL W/45° MITER SEALED WITH SILICONE TO MATCH ROOFJOINT MITER

WATERTIGHT FACTORY APPLIED SILICONE BELLOWS



RJ/COS CUSTOM TRANSITION UNIT (BY EMSEAL)

100% ACRYLIC-IMPREGNATED PRE COMPRESSED FOAM. (CONTAINS NO WAX OR WAX COMPOUNDS)

EMSEAL JOINT SYSTEMS LTD.

ROOFJOINT 0400 - SEISMIC COLORSEAL SOLID-WALL CLOSURE

THIS DOCUMENT CONTAINS INFORMATION OF A CONFIDENTIAL NATURE AND IS PROPRIETARY TO EMSEAL JOINT SYSTEMS LTD. ANY UNAUTHORIZED USE WILL BE PROSECUTED. THIS DRAWING IS PROTECTED BY COPYRIGHT, THE RIGHT TO REPRODUCE IN ANY FORM BEING THE EXCLUSIVE RIGHT OF EMSEAL JOINT SYSTEMS LTD. ANY UNAUTHORIZED REPRODUCTION WHETHER IN TWO OR THREE DIMENSIONS WILL BE PROSECUTED. © 2014 EMSEAL JOINT SYSTEMS LTD.

| | | | |
|------------------|---------------------|------------------|---------------------|
| DRAWN BY: JNM | DATE: 2014/02/05 | SCALE: N.T.S. | SHEET No: 2 OF 2 |
|------------------|---------------------|------------------|---------------------|

PART NUMBER:
RJ-0400-COS-SOLID-WALL