



BEJS-ON-A-REEL

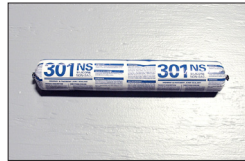
DO NOT INSTALL THIS MATERIAL UNTIL ALL MEMBERS OF YOUR CREW HAVE READ AND UNDERSTAND THESE INSTRUCTIONS AND ALL RELEVANT SAFETY DATA SHEETS. IF YOU DO NOT UNDERSTAND ANY PART OF THESE INSTRUCTIONS CALL EMSEAL AT **1-800-526-8365**

INSTALL DATA

BEJS Pre-Install Equipment Checklist

In addition to safety equipment required to comply with applicable federal, state and local safety regulations, equipment to prepare and repair the joint-faces, as well as normal tools of the trade, the following are required:

Duct Tape (2 1/2 times the length of joint)--*optional*--if you care about masking the joint for drips.



Tape measure

Sausage caulk guns to hold 20-oz silicone sausages



Sausage-gun nozzles (cones)

Long-bladed, serrated bread knife



Chemical-resistant gloves

Caulk knives for tooling sealant bands



Acetone or effective alternative solvent for cleaning joint-faces and tools.



• Remove residues of old sealants.

• Apply solvent or other agent suitable for use on the substrates to clean, lint-free rags.

Clean lint-free, 100% cotton rags



• Wipe joint faces to ensure joint sides are free of dust, previous sealant, oils, grease, etc.

MATERIAL STORAGE:

Cold Days: Store material, off the floor, inside at above 68°F (20°C). It will recover slower when cold and faster when warm.

Very Hot Days: Keep material out of direct sun when the temperature is greater than 80°F (27°C) until immediately prior to installation.



• Cut the tube tip to provide a 1/4" opening in the nozzle.

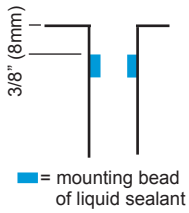
• Load the sausage into the sausage gun.



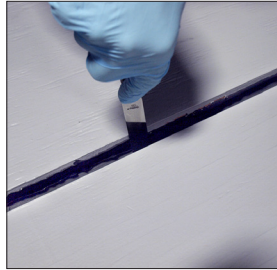
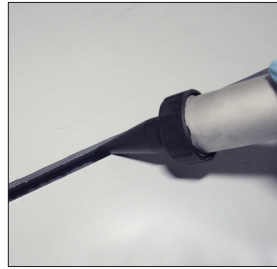
• Cut off the top of the sausage to allow the sealant to flow.

• Attach the nozzle tip.

Step 2: Apply Installation Sealant Band

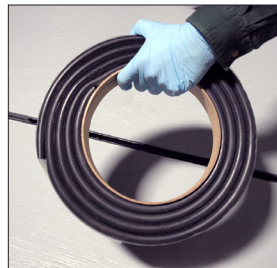


- Gun a 1/4" (6mm) wide mounting bead of sealant onto each joint face, about 3/8" (8mm) back from the joint edge.
- Strike the mounting bead of liquid sealant with a caulk knife to ensure that it is continuous, even, and properly bonded to the substrate.



Step 3: Select and Open Material

- Open a box marked with a material size to match the joint size.
- Remove a reel from box



- Cut the packing tape at the beginning of the roll.
 NOTE: Be sure to cut away from the product so you don't slice into the side of the BEJS-ON-A-REEL.



- Peel back the packing tape and release liner at the beginning of the reel.



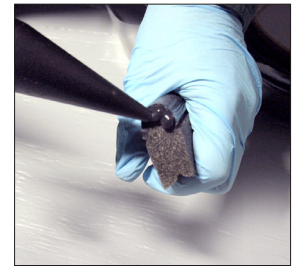
- Extend the blade on your long-bladed utility knife.

- Using a back and forth "sawing" motion, square off the end of the material. Wetting blade with water will facilitate cutting.



Step 4: Wet Seal the Starter End

- On the starter piece, apply a bead of sealant along the silicone coating

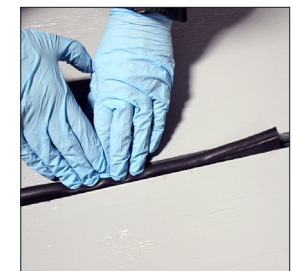


Step 5: Insert Material Into Joint

- Uncoil the first end from the reel.
- Insert the end into the bottom of the joint. Leave the end of the material sticking out of the joint about 3/4" (20mm).



- RECESS BEJS 1/2" (12mm) from the surface.
- Work your way along the joint pushing on the material while inserting it.



- Remove the release liner as you go.



- REMEMBER: ALWAYS PUSH, Never Pull. Do Not Stretch the material.

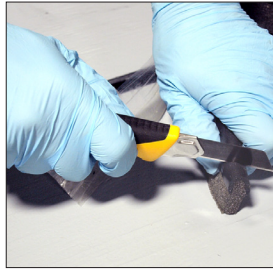
- By pushing on the material it will "snake" into the joint from side to side.

- As it expands to fill the joint, it will also push along its length ensuring the joints and ends are a tight fit.



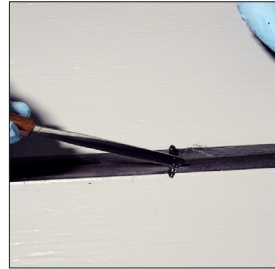
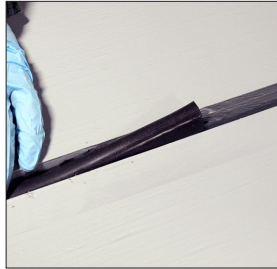
Cut Material Slightly Longer Than Needed

- Cut each run of material about 3/8" (8mm) longer than needed.
- "Snake" the excess into each run.



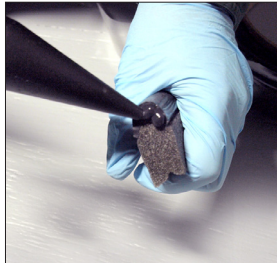
Joining Straight Lengths

- At the end of a roll, leave the end of the material sticking out of the joint about 3/4" (20mm).



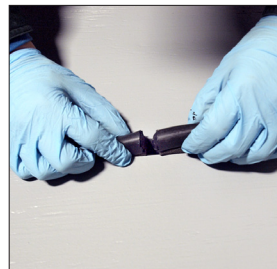
- Tool away the excess joining sealant and blend the join.

- As in Step 4, apply a bead of sealant along the silicone edge.



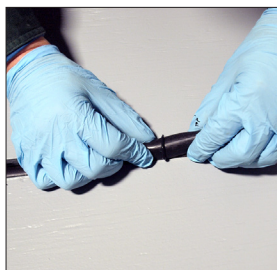
- Insert gun tip between edge and substrate. Apply a corner bead of silicone.

- Open another reel, square off the end, and join it to the piece sticking out of the joint.



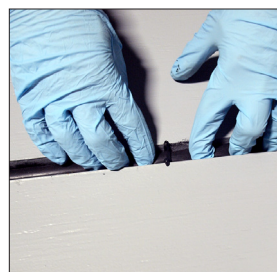
- Tool the top edge of the sealant silicone bead to a smooth blend with the outside edge of the bellows.

- Push pieces firmly together.



- Any exposed end of BEJS must have its exposed vertical face covered with a coat of silicone. Apply silicone to this face.

- Install the rest of the joint run then come back and push the joint into the joint recessed 1/2" (12mm) from the surface.

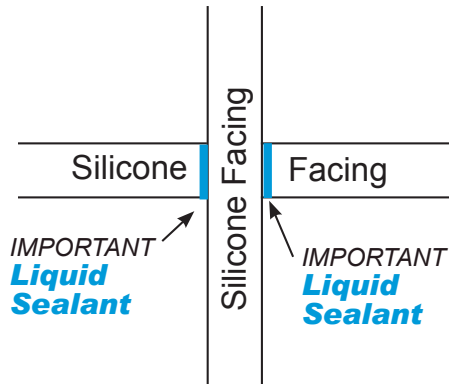


- Smooth surface of silicone with caulking knife and insert end back into the joint.

Joins at Intersections

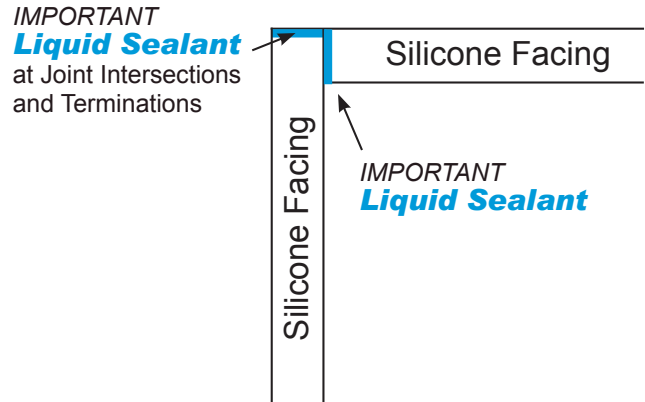
Cross Transition

(elevation)



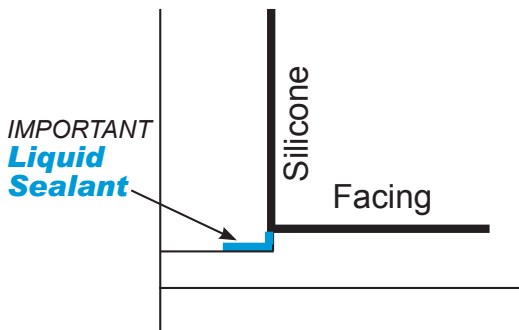
Corner Transition

(elevation)



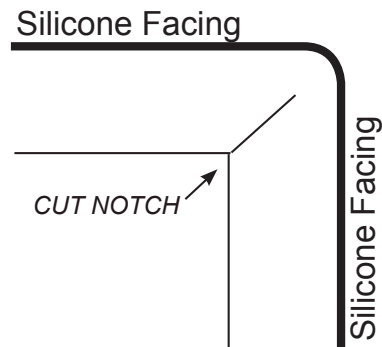
Inside Corner Transition

(side view)



Outside Corner Transition

(side view)



Notes