



[www.emseal.com](http://www.emseal.com)

[Interior Joint Index](#)  
 [A/E Application Index](#)  
 [Literature & MSDS](#)  
 [REP/Distributor Finder](#)  
[Project Profiles](#)  
 [CAD Details](#)  
 [AIA/CES](#)  
 [Home](#)  
 [Company Profile](#)  
 [Contact Us](#)

Last modified: May 19, 2005

Founded 1959. In North America since 1979.



(Need help with **Floor Expansion Joints**? Fax Us This Checklist)

### JOINT SELECTION:

To select a joint for lasting function in your application first calculate anticipated LOAD, MOVEMENT, and JOINT-GAP SIZE, then ask and answer the following questions:

- 1) Can this model handle the loads from my expected traffic?
- 2) Can this model handle the expected movement?
- 3) Will this model straddle my designed joint-gap?

If you answer "NO" to any of the questions move to the next model. When you can answer "YES" to all three questions you have probably found your joint system.

Need Help or confirmation of your selection? [FILL IN and FAX US THIS CHECKLIST.](#)

### DESIGN FOR DURABILITY:

Point loads are the number one killer of interior floor expansion joints and surrounding flooring materials.

"Rubber-and-rail" systems don't last. Cover-plates and lightly-constructed "centering-bar and plate" systems create slip, trip and noise hazards.

EMSEAL is proud to offer a unique line of elegant, well-engineered floor expansion joint systems.

The superior design of the MIGUTRANS series eliminates dangerous, noisy,

## MIGUTRANS FS 155/...



*Unique, center support ensures smooth traffic surface.*

**For joint sizes up to 4 3/4-inches (120 mm) in floors where high point loads are expected:**

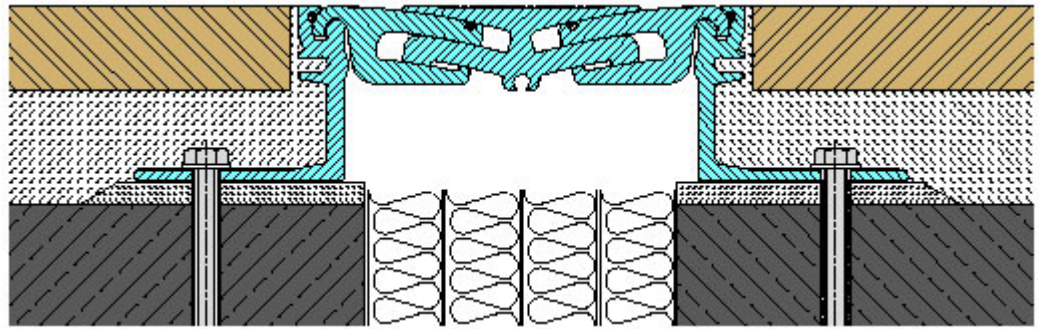
- Fork Lifts
- Trucks
- Emergency Vehicles
- Scissor Lifts
- Coin Carts
- Luggage Carts
- Hand Trucks
- Pedestrians
- Mobile Medical Equipment
- Gurneys
- Vendor Carts
- Maintenance Equipment

DIMENSIONS and MOVEMENT CAPABILITY:		
Joint Size	Movement Capability	Visible Width
Up to* mean joint size of:		
<b>4 3/4"</b> (120mm)	<b>1 1/2"</b> (40 mm)  <b>+3/4" and - 3/4"</b> (+20mm and -20 mm)	<b>6 1/4"</b> (157mm)
*For example: Can be used to straddle mean joint sizes of <b>1", 2" or 3", 4" and 4 3/4"</b> (25, 50, 75, 100, and 120mm)		from mean-T <sup>0</sup> midpoint of movement range

and unsightly joint deterioration as well as the disruption and expense of replacing failed systems.

The complete line of options caters to a variety of design conditions in both new and retrofit construction. Wheel and axle load ratings ensure suitability for use by everything from coin carts and mobile medical equipment to the heaviest forklifts and other materials handling equipment.

Make MIGUTRANS the Basis of Design for your floors. [Go to the MIGUTRANS HIGH-POINT-LOAD JOINT index at emseal.com.](#)



NOT TO SCALE

LOAD CAPACITY		
Load per axle for trucks with pneumatic tires:	Load per axle for forklifts with pneumatic or solid, soft-rubber tires:	Load per axle for equipment with solid, hard-plastic tires:
<b>45,00 lbs</b> 20,400 kg 200 kN	<b>29,225 lbs</b> 13,254 kg 130 kN	<b>840 lbs/inch width of tire</b> 15 kg/mm 147 N/mm
	NOTE: Because a fork lift load is carried almost entirely on the front axle, this can also be considered the gross, loaded vehicle weight.	NOTE: Multiply total width of all tires on axle by above value to get total load capacity.
For assistance in calculating wheel loads of expected vehicles-- <a href="#">Consult EMSEAL</a>		

#### ADVANTAGES:

-Long lasting, maintenance-free, all-metal, aircraft-aluminum construction (Alloy 6061- $AlMgSi$ )\*

-ADA compliant

-Fire-rating achievable through addition of fire caulk or blanket--[Consult EMSEAL](#)

-Ribbed, no-skid surface

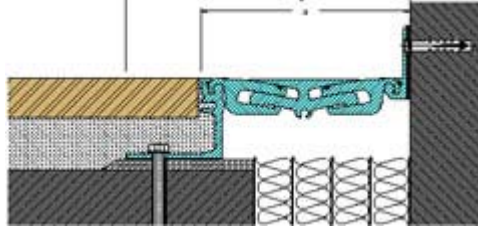
-Smooth, no-bump traffic surface at any opening state of the joint

-Grooveless, dirt-free surface

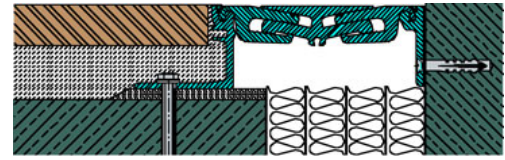
-Three-way movement capability

\*Alloy 6061,  $AlMgSi$  (aluminum, magnesium, silicon), a cold finished aluminum wrought product, is offered for use in applications requiring excellent corrosion resistance and anodizing response, good workability, excellent joining characteristics, and good acceptance of applied coatings. Some applications include impact stock for low pressure ammunition and aerospace connectors.

#### Floor-to-Wall Version (E-4)



#### Floor-to-Wall Version (E-3)



LEG-HEIGHT OPTIONS & INSTALLATION DIMENSIONS:						
Model #:	Leg Height	Floor-To-Wall Options	Production Length	Overall Width	Installation Height	Blockout Width
FS 155/3000	<b>1 3/16"</b> (30mm)	E-4 (wall flange turned up)	<b>13.12'</b> (4 m)	<b>10 3/4"</b> (273mm)	Finished floor level = Leg Height + 1/4-inch (6mm) for epoxy-mortar setting-bed	For retrofit or solid slab installations, Blockout recess width will vary depending on joint-gap size-- <a href="#">Consult EMSEAL</a>
FS 155/4200	<b>1 5/8"</b> (42mm)					
FS 155/5200	<b>2"</b> (52mm)					
FS 155/6200	<b>2 1/2"</b> (62mm)					
FS 155/7700	<b>3"</b> (77mm)	E-3 (wall flange turned down)				
FS 155/8700	<b>3 1/2"</b> (87mm)					
FS 155/9700	<b>3 7/8"</b> (97mm)					

--"Interior-Floor Expansion Joint Checklist"--

--EMSEAL FS155 ProductData (.pdf)--(printable version of this web page)

--Link to CAD Details (.dwg)--

--GuideSpec-05800-Floor&Wall (.htm)--

--GuideSpec-05800-Floor&Wall (.doc)--

**Interior Joint Index   A/E Application Index   Literature & MSDS   REP/Distributor Finder**  
**Project Profiles   CAD Details   AIA/CES   Home   Company Profile   Contact Us**

**Phone/Fax:**

TOLL FREE USA & CANADA: 800-526-8365  
Phone: 508-836-0280 Fax: 508-836-0281

**Email/Electronic**

or [techinfo@emseal.com](mailto:techinfo@emseal.com)  
or use our [Feedback Form](#)