

30 ANCHORS TOTAL PER  
13.12 LF (4m) LENGTH  
(15 ANCHORS EACH SIDE)

.20 IN (5mm)  
CARPET FLOORING

3.82 IN  
(97mm)

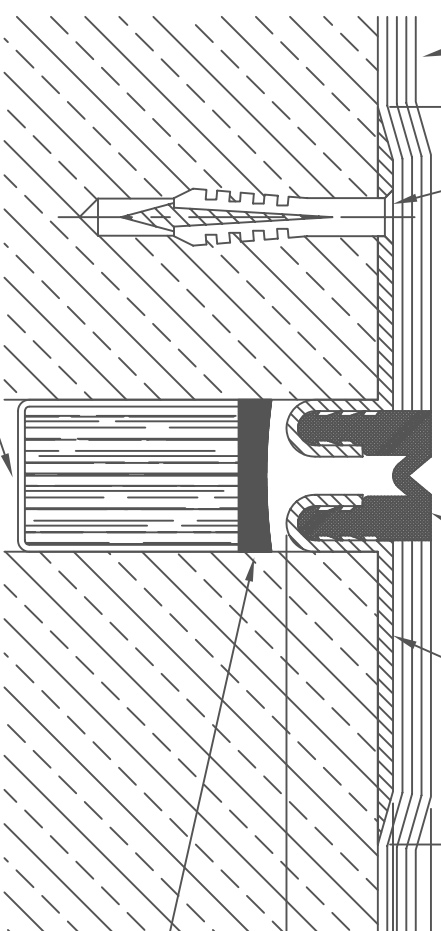
ELASTOMERIC SEAL - AVAILABLE  
IN GREY

MIGUA FTN 20/12

.20 IN  
(5mm)

.08 IN  
(2mm)

.48 IN  
(12mm)



OPTIONAL - BY OTHERS  
MULTI-LAYER ULTRA BLOCK  
INSTALL TO PROPER DEPTH  
PER MFG'R'S. SPECIFICATIONS  
FOR PROPER FIRE RATING.

MOVEMENT = + .12 IN (3mm)  
- .12 IN (3mm)

OPTIONAL - BY OTHERS  
UL CLASSIFIED SEALANT  
INSTALL PER MFG'R'S.  
SPECIFICATIONS

SEALANT MFGRS:  
- DOW CORNING  
- SPECSEAL

CD-ROM VERSION 3 FILENAME: FTN2012WithCarpet

**EMSEAL JOINT SYSTEMS LTD.**

MIGUA FTN 20/12 INTERIOR JOINT

C:\DETAILS\MIGUA\FN\20\

THIS DOCUMENT CONTAINS INFORMATION OF A CONFIDENTIAL NATURE  
UNAVAILABLE TO THE PUBLIC AND IS PROPRIETARY TO EMSEAL  
CORPORATION. ANY UNAUTHORIZED USE WILL BE PROSECUTED.  
THIS DRAWING IS PROTECTED BY COPYRIGHT. THE RIGHT TO  
REPRODUCE IN ANY FORM BEING THE EXCLUSIVE RIGHT OF EMSEAL  
CORPORATION. ANY UNAUTHORIZED REPRODUCTION OF THIS DRAWING  
TWO OR THREE DIMENSIONS WILL BE PROSECUTED.

DRAWN	DATE:	SCALE:	SHEET
BY: WAJ	2/17/98	N.T.S.	No:
PART NUMBER:	003-0-00-00		